

HUSSEY GAY BELL
— Established 1958 —





FIRM INTRODUCTION

Our Story



Six Decades of Trusted Design Leadership Across Georgia and Beyond

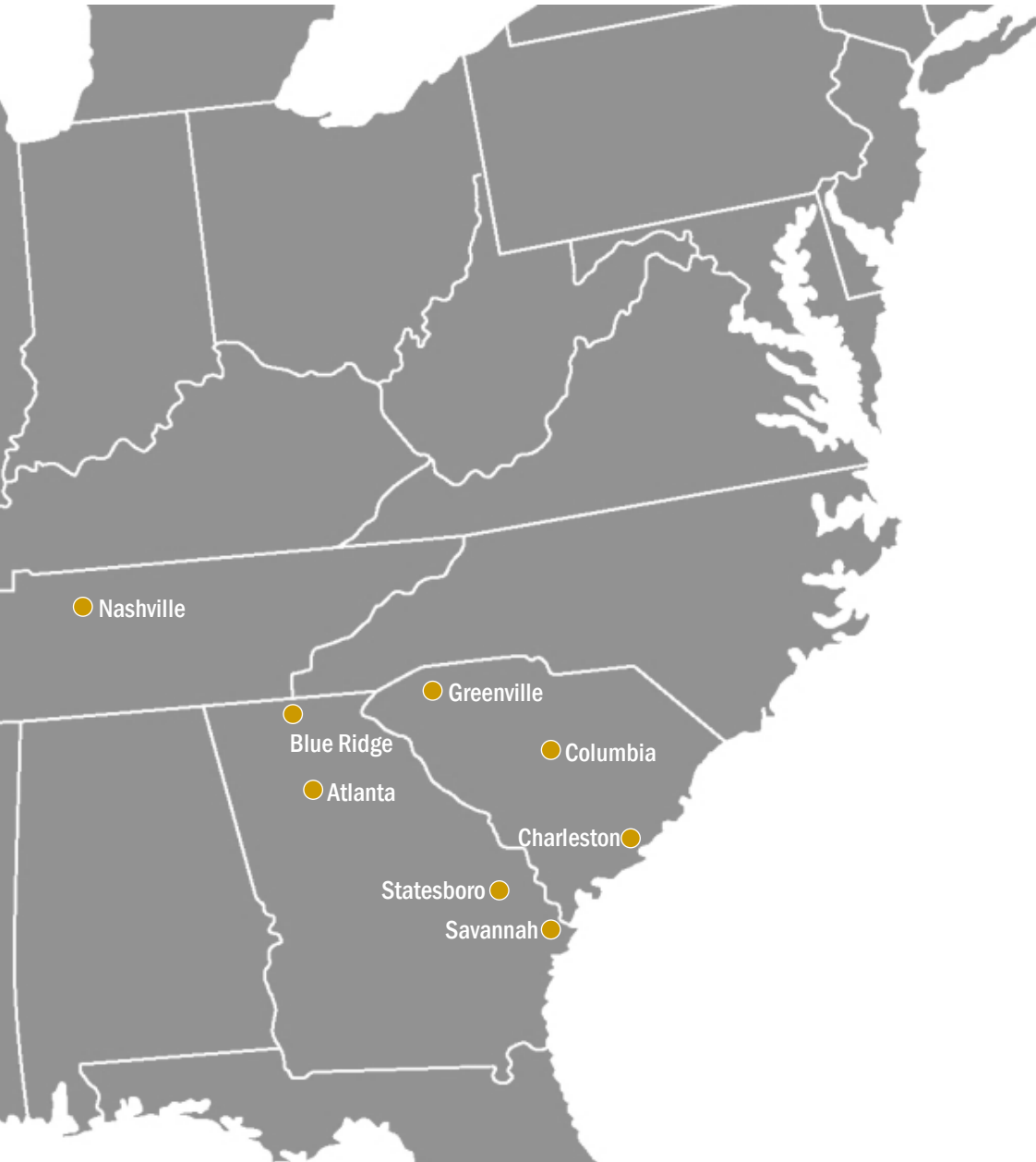
- Innovative, Collaborative Solutions
- Award-Winning Project Delivery
- Community-Centered Leadership

For more than 60 years, Hussey Gay Bell has delivered excellence through innovation, collaboration, and initiative. Our work is defined by trusted client relationships, technical rigor, and a deep commitment to the communities we serve.

Our people are our greatest strength — professionals who uphold the highest standards of service, leadership, and civic engagement.

—G. Holmes Bell IV, PE, CEO & Chairman

Firm Overview



1958

Year of Founding

68

Years in Business

8

Regional Offices

175+

Professionals

12

In-House Disciplines

2025

ENR Top 500 Design Firm

Services

Architecture

Interior Design

Civil Engineering

Transportation Systems Engineering

Water & Wastewater Engineering

Natural Gas Systems Engineering

Environmental Engineering

Structural Engineering

Landscape Architecture

Surveying

Permitting

Construction Management Services

Markets

Commercial

Education

Government

Healthcare

Industrial

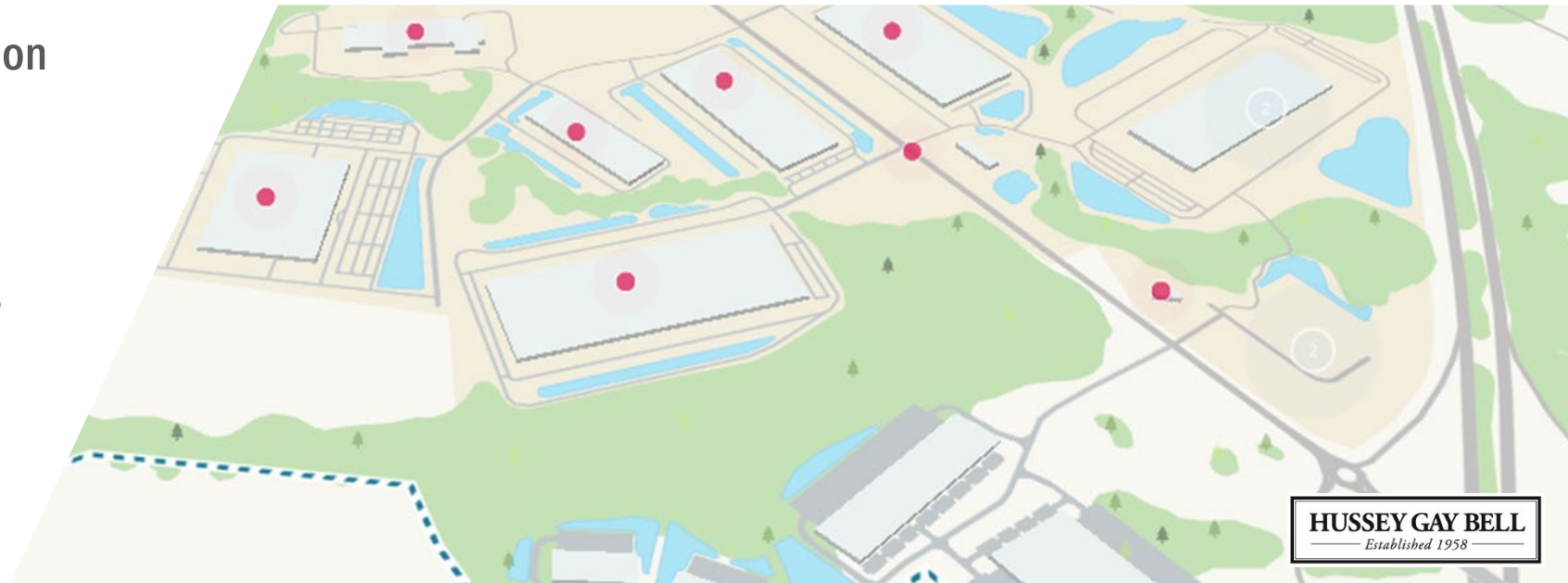
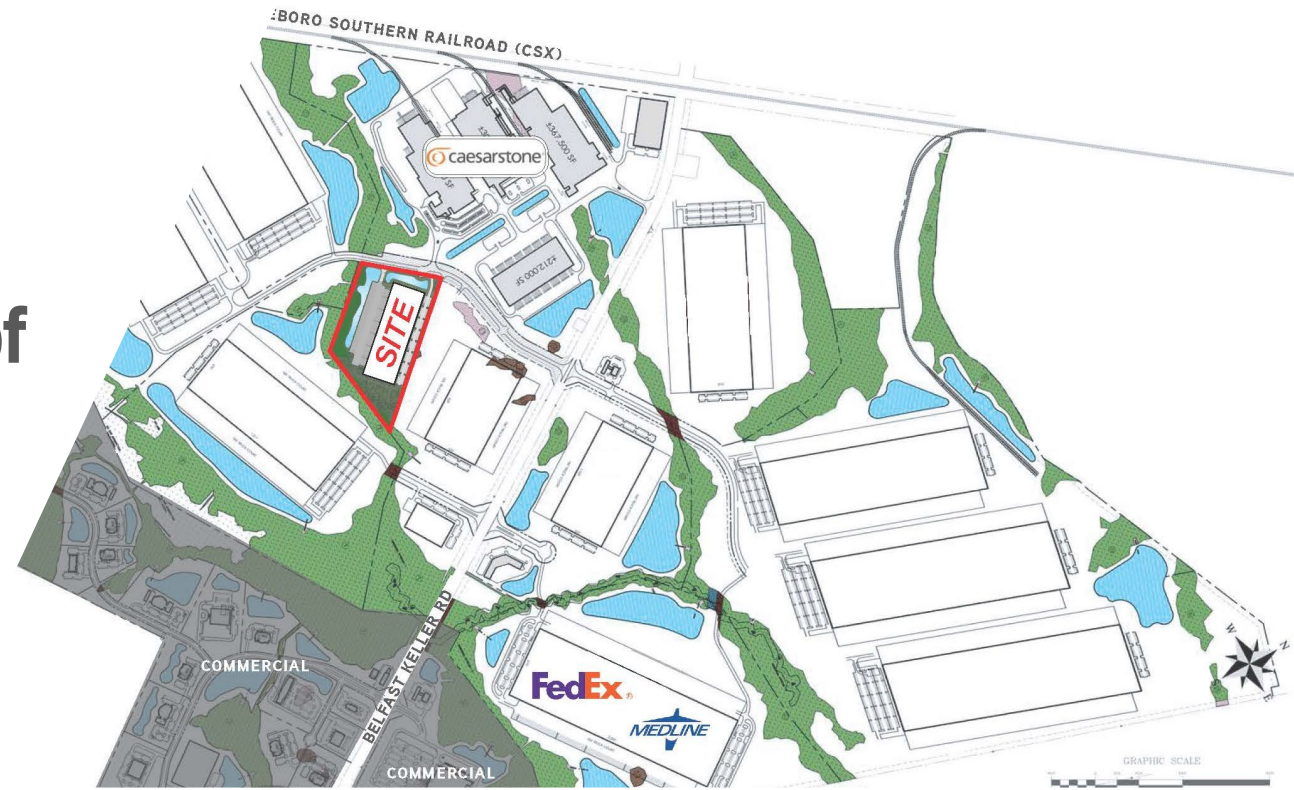
Residential

Transportation

Water

Planning and designing for economic development projects requires a host of services, we can help.

- Master Planning & Due-Diligence
- Conceptual Site Plan Exhibits
- Site Certification Programs
- Grant & Funding Assistance
- RFI Assistance
- Graphics/Videography Coordination
- Direct Prospect Engagement
- Off Market Tract Identification
- Intergovernmental Agreements
- Full Design Services, Permitting & Construction Admin



Target Industries Served

Aerospace

Agribusiness

Automotive

Defense

Electric Vehicle Manufacturing

Energy

Film & Entertainment

Food Processing

Headquarters

Life Sciences

Logistics & Supply Chain

Manufacturing

Technology



Gulfstream



HMG Metaplant America



Mercedes-Benz



LG Energy Solution



HMi HOME MERIDIAN INTERNATIONAL



SEWON

WESTINFURNITURE

HYUNDAI GLOVIS

HYUNDAI MOBIS





EXPERIENCE

HUSSEY GAY BELL
Established 1958



Automotive

Electric Vehicle Manufacturing

Manufacturing

Hyundai Motor Group Metaplant America (HMGMA)
Bryan County, GA
Size: 3,000+ Acres
Role: A-E design services for multiple Tier 1 supplier projects



Automotive

Electric Vehicle Manufacturing

Manufacturing

Hyundai Mobis BSA 2 and Module Shop @ HMGMA

Bryan County, GA

Size: 150 Acres

Role: A-E design services & survey

HUSSEY GAY BELL
Established 1958

Hyundai Motor Group Metaplant America, Bryan County, GA

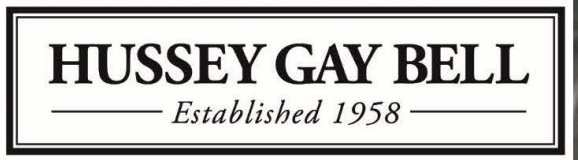
Hussey Gay Bell On-Site Tier 1 Supplier Projects Exhibit

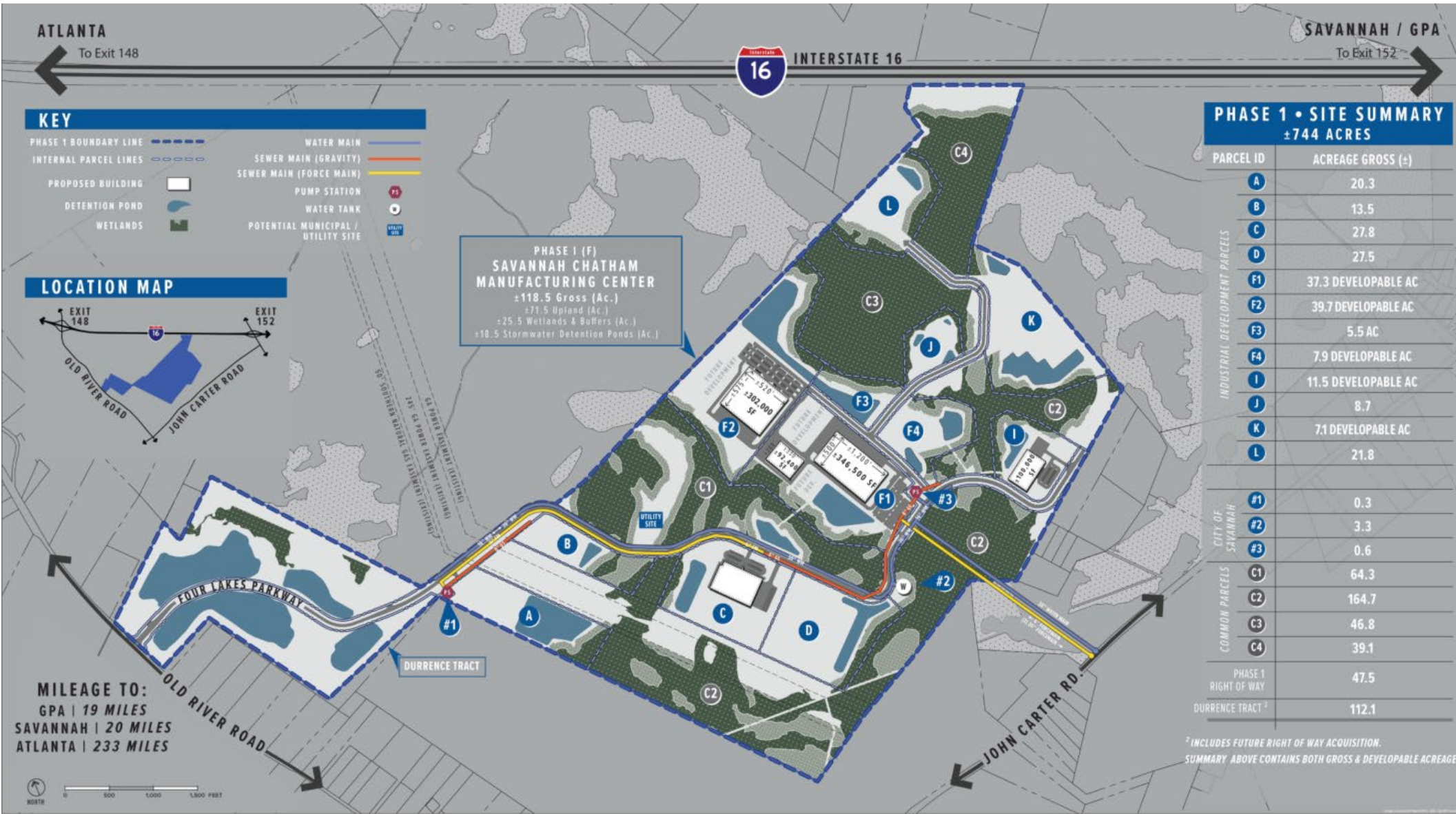


- Hyundai Mobis BSA 2 (Battery Assembly Cell): Architecture, Structural, Site/Civil, Survey
- Hyundai Mobis Module Shop (Module Assembly): Architecture, Structural, Site/Civil, Survey
- Hyundai Mobis Parking: Site/Civil
- JV Battery Plant: Architecture, Structural
- Hyundai Glovis (Logistics/Shipping): Site/Civil
- Hyundai Glovis Future Expansion
- Hyundai Materials: Site/Civil

Hussey Gay Bell Offsite Tier 1 Supplier Projects

- 1) Seoyon E-Hwa (Door Trims, Headlining, Tailgate Trims): Architecture, Structural, Site/Civil, Survey – Chatham County
- 2) Hyundai Mobis PE System Shop (Power Electric System): Site/Civil for Access Road – Bryan County
- 3) Seohan Auto Georgia (Shafts, Axles, Brake Systems): Architecture – Liberty County
- 4) Sewon America (EV Body Parts): Site/Civil – Effingham County
- 5) PHA (Door Modules, Tailgate Latches Hood Latches): Architectural QA/QC – Chatham County
- 6) Daechang Seat Corporation (Seat Frames): Architecture, Site/Civil, Survey – Chatham County





Savannah Chatham
 Manufacturing Center
 Chatham County, GA
 Size: 744 Acres
 Role: Due-Diligence, Lead
 Utilities Engineer, Multiple
 Tier 1 Supplier Projects

Automotive
 Manufacturing

CONCEPTUAL MASTER PLAN | PHASE 1
SAVANNAH CHATHAM MANUFACTURING CENTER
 CHATHAM COUNTY, GEORGIA
 JULY 2023

THOMAS HUTTON
 50 PARK OF COMMERCE WAY
 SAVANNAH, GA 31405 • 912.234.8300
 WWW.THOMASANDHUTTON.COM

HUSSEY GAY BELL
 Established 1958



Automotive

Manufacturing

Seoyon E-Hwa Manufacturing Facility
Savannah Chatham Manufacturing Center
Chatham County, GA
Role: Lead Architect/Engineer

HUSSEY GAY BELL
Established 1958



Headquarters

Manufacturing

J. C. Bamford North America Headquarters
Tract, Pooler, GA

Size: 1,100 Acres, 500,000+ SF

Role: Due-Diligence, Lead Architect/Engineer



Aerospace

Manufacturing

Boeing 787 Manufacturing Facility Master
Planning & Design, Charleston, SC
Size: 240 Acres
Role: Due-Diligence, Civil Engineering

HUSSEY GAY BELL
Established 1958



Logistics & Supply Chain

NFI Industries Transload & Cross-Dock Facility at
Georgia Ports, Port Wentworth, GA
Size: 300,000 SF
Role: Lead Architect/Engineer



331 Acres



Automotive

Manufacturing

GA Highway 257 Rail-Served Site

Dublin-Laurens County, GA

Size: 331 Acres

Role: Due-Diligence, Lead Civil Engineer & Surveyor

HUSSEY GAY BELL
Established 1958



Automotive

Manufacturing

Seohan Auto Georgia Manufacturing Facility
Tradeport East Business Center, Midway, GA
Size: 298,000 SF
Role: Lead Architect



Automotive

Manufacturing

Grande View Tract, Effingham County, GA
Size: 448 Acres
Role: Role: Due-Diligence, Lead Civil Engineer & Surveyor



Automotive

Manufacturing

Sewon America
Grande View Tract, Effingham County, GA
Role: Lead Civil Engineer



PIN# 010002
EFFINGHAM COUNTY BOARD
OF EDUCATION
593 FLORENCE RD.

AREA	TOTAL M.S.F.	REMAINING M.S.F.
AREA 1	337 M.S.F.	090 M.S.F.
AREA 2	194 M.S.F.	054 M.S.F.
AREA 3	872 M.S.F.	
AREA 4	630 M.S.F.	



OVERALL MASTER PLAN
SAVANNAH GATEWAY INDUSTRIAL HUB
EFFINGHAM COUNTY
DATE: JUNE 11, 2026 SCALE: 1" = 500'

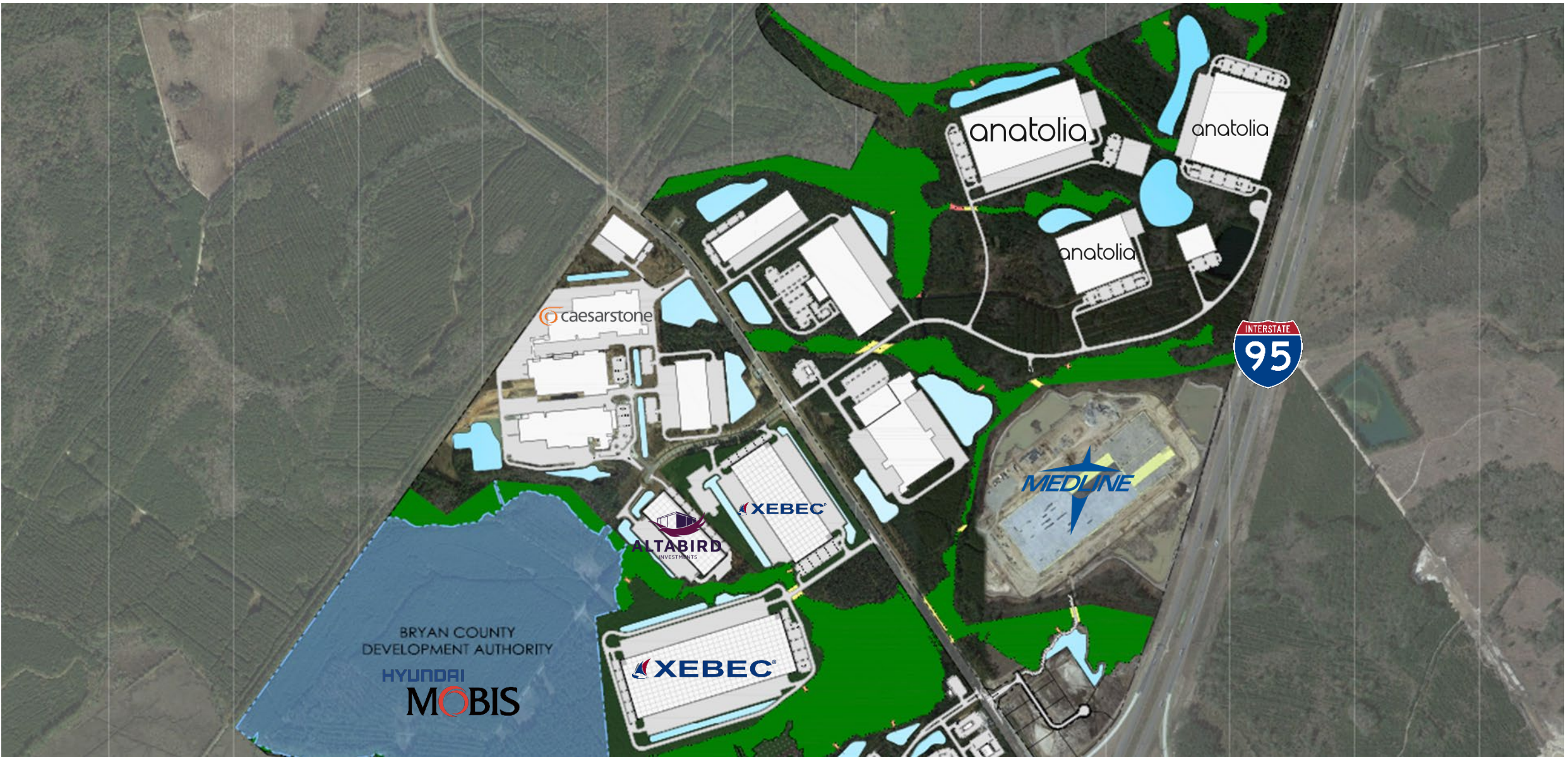


May 13, 2026 - 6:01 PM
 E:\00_Misc\Drawings\Town\MASTER_PLAN\2026\0423_Master_Plan\2026\0423_CoverSheet.dwg
 User: P:\Gentry\industrial\HUB\04\Plan\2026\0423_Master_Plan\2026\0423_CoverSheet.dwg
 Plot: P:\Gentry\industrial\HUB\04\Plan\2026\0423_Master_Plan\2026\0423_CoverSheet.dwg



Logistics & Supply Chain

A&R Logistics (Quantix) at Savannah Gateway Industrial Hub
Rincon, GA
Size: 1,400,000 SF
Role: Lead Architect/Engineer



Logistics & Supply Chain

Manufacturing

Belfast Commerce Park at Heartwood, Bryan County, GA
Size: 1,040 Acres
Role: Due-Diligence & full A-E designs for multiple end users



Logistics & Supply Chain

Brown Thrasher Logistics Center Warehouse at Belfast Commerce Park at Heartwood, Bryan County, GA

Size: 281,067 SF

Role: Lead Civil Engineer

HUSSEY GAY BELL
Established 1958



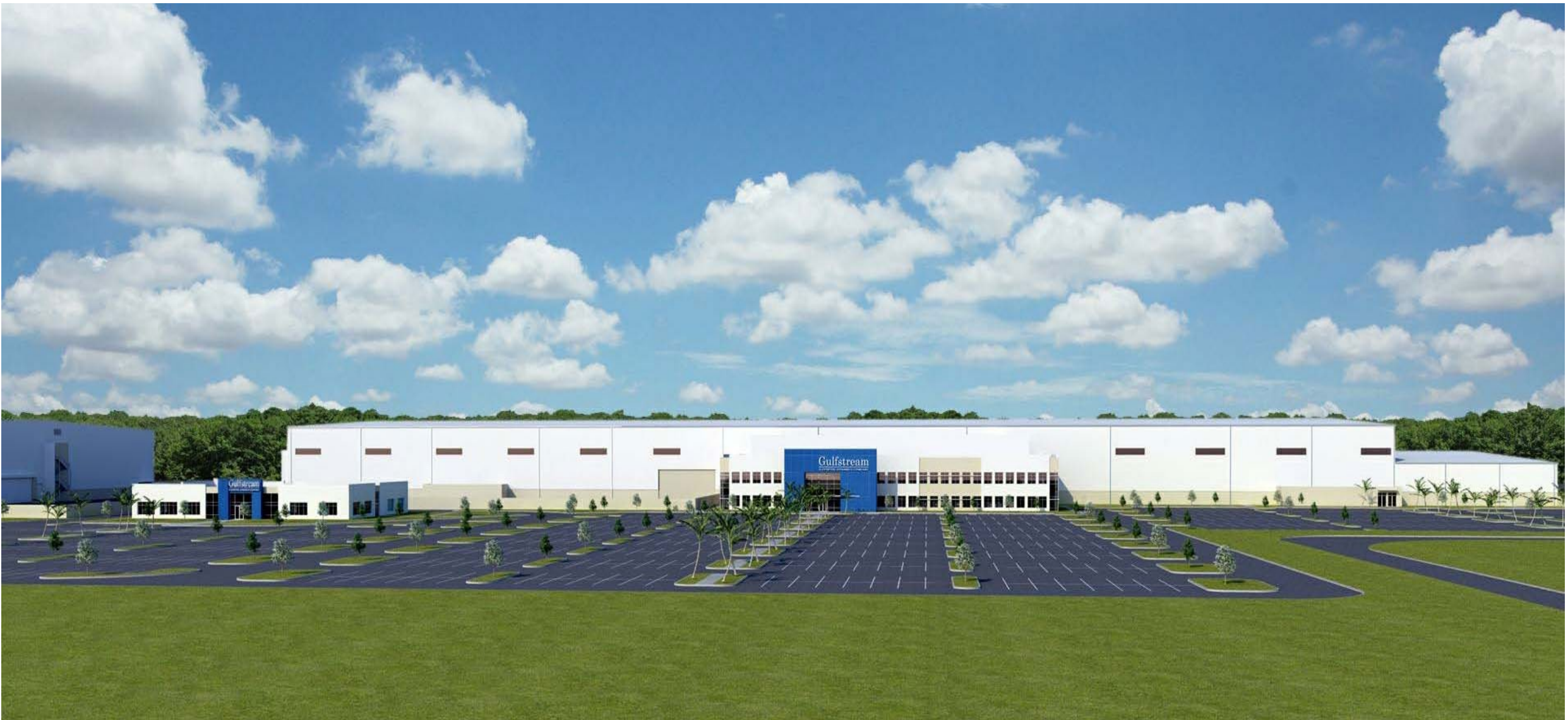
Logistics & Supply Chain

Hooker Furnishings at Tradeport East Business Center, Midway, GA

Size: 1,000,000 SF

Role: Lead Architect/Engineer

HUSSEY GAY BELL
Established 1958



Aerospace

Headquarters

Gulfstream Building Z
Savannah, GA
Size: 440,000 SF
Role: Lead Civil Engineer



Gulfstream Wing Assembly Building
Savannah, GA
Size: 223,615 SF
Role: Lead Architect/Engineer



Aerospace

Manufacturing





CREATIVE SITE MAXIMIZATION

Trends

- Less Distribution / Speculative Development
- More Manufacturing Development
- Incentives
- EV and Renewable Energy
- Labor Shortage
- Building Size
- Rail Access
- Proximity to Interstate



Why Us?

- Economic Development Projects, It's What We Do
- Regional Service Area For Economic Development Projects
- Knowledge of Sites, Land Inventory (On- and Off-Market) & Available Buildings
- Customized Site Readiness, Real Estate, and Permitting Strategies
- Responsive, Connected And Committed Team Leads
- State, Utility Partners, Local EDAs/Alliances, Regulatory Authorities Relationships
- In-House Turnkey Abilities – Arch/Structural/Civil/Environmental Support

HUSSEY GAY BELL
— Established 1958 —

