

HUSSEY GAY BELL
Established 1958





FIRM INTRODUCTION

Our Story



Six Decades of Trusted Design Leadership Across Georgia and Beyond

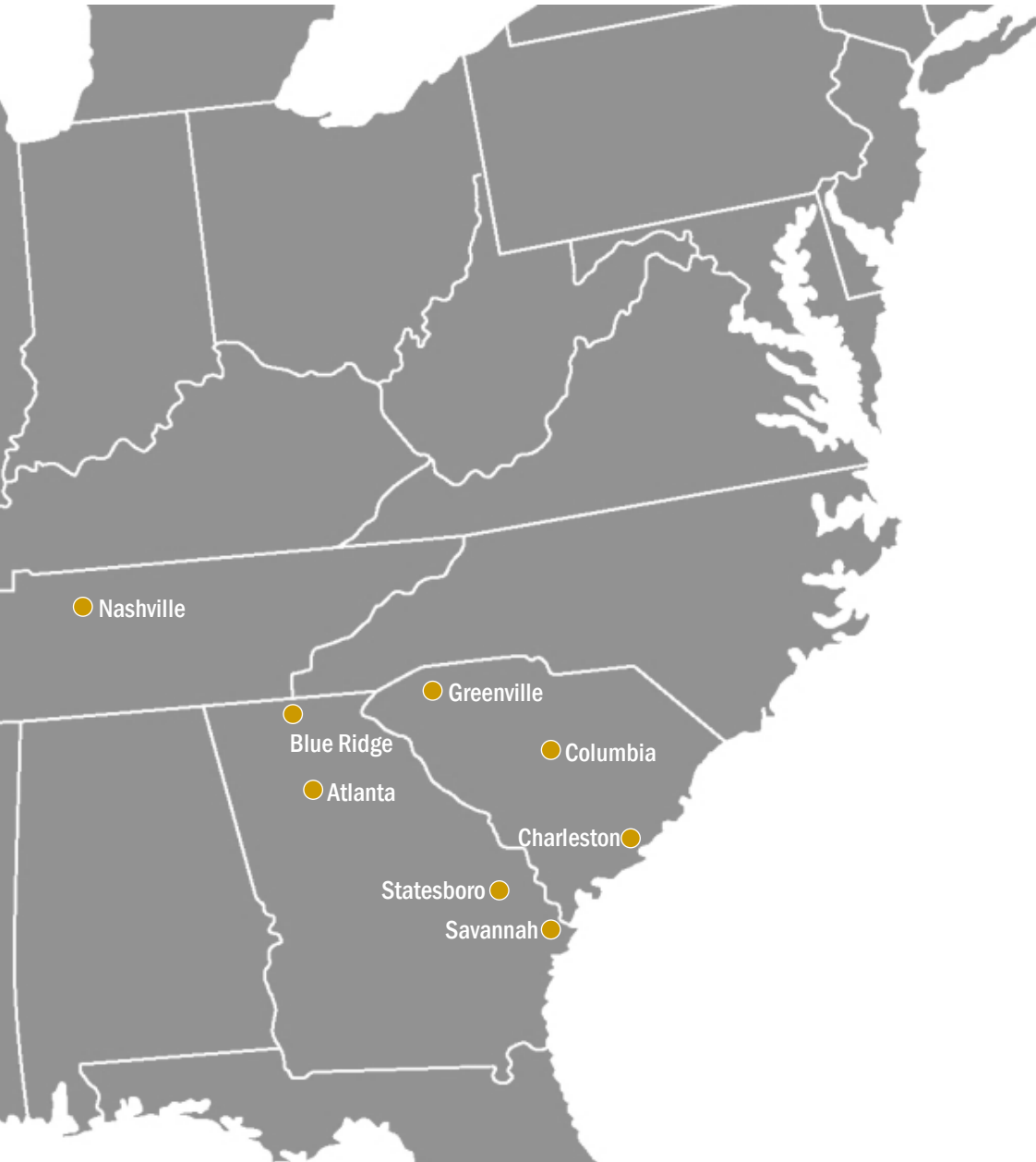
- Innovative, Collaborative Solutions
- Award-Winning Project Delivery
- Community-Centered Leadership

For more than 60 years, Hussey Gay Bell has delivered excellence through innovation, collaboration, and initiative. Our work is defined by trusted client relationships, technical rigor, and a deep commitment to the communities we serve.

Our people are our greatest strength — professionals who uphold the highest standards of service, leadership, and civic engagement.

—G. Holmes Bell IV, PE, CEO & Chairman

Firm Overview



1958

Year of Founding

68

Years in Business

8

Regional Offices

175+

Professionals

12

In-House Disciplines

2025

ENR Top 500 Design Firm

Services

Architecture

Interior Design

Civil Engineering

Transportation Systems Engineering

Water & Wastewater Engineering

Natural Gas Systems Engineering

Environmental Engineering

Structural Engineering

Landscape Architecture

Surveying

Permitting

Construction Management Services

Markets

Commercial

Education

Government

Healthcare

Industrial

Residential

Transportation

Water



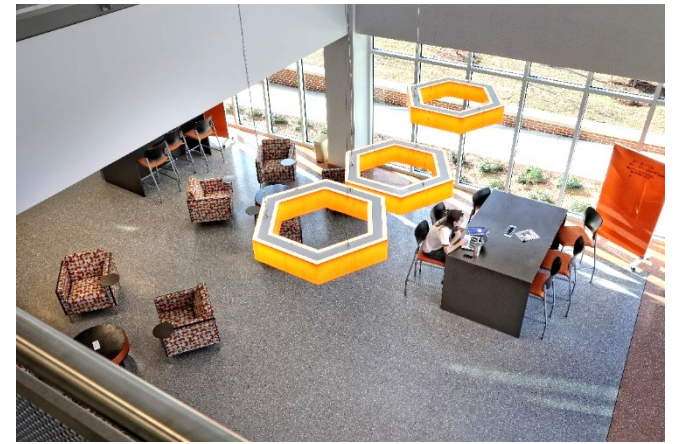
EXPERTISE



**ACADEMIC BUILDINGS, CLASSROOMS
& LABS**



Spearman C. Godsey Science Center, Mercer University, Macon, GA
Size: 144,000 SF
Construction Cost: \$44M
Role: Architecture, civil + structural engineering
Images courtesy/copyright of The Fortune Image





School of Medicine
Mercer University, Savannah, GA
Size: 60,000 SF Renovation & 30,000 SF Addition
Construction Cost: \$8.9M
Role: Architecture, civil + structural engineering
Images courtesy/copyright of Atlantic Archives



Galen College of Nursing, Pooler, GA
Size: 67,000 SF
Construction Cost: \$28M
Role: Civil Engineering
Image courtesy/copyright of Shamrock+



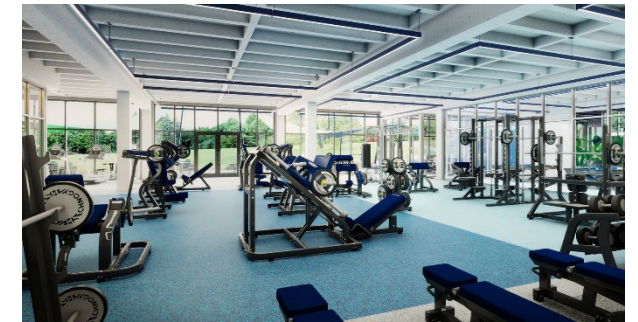
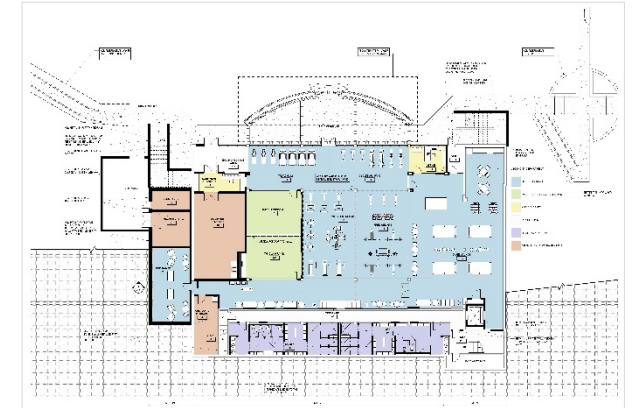
Science and Technology Center & Marine Science Center, Savannah State University, Savannah, GA

Size: 47,000 SF

Construction Cost: \$15.6M

Role: Architecture, interiors, civil + structural engineering





Dr. Mark A Ivester Center for Living and Learning (“The Mark”)
North Georgia Technical College, Clarksville, GA
Size: 25,000 SF
Construction Cost: \$13.56M
Role: Architecture, civil + structural engineering

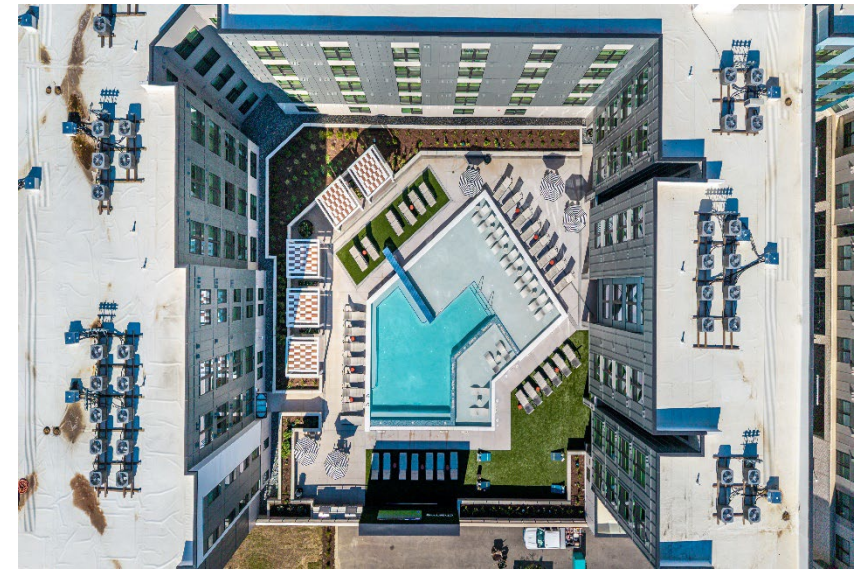
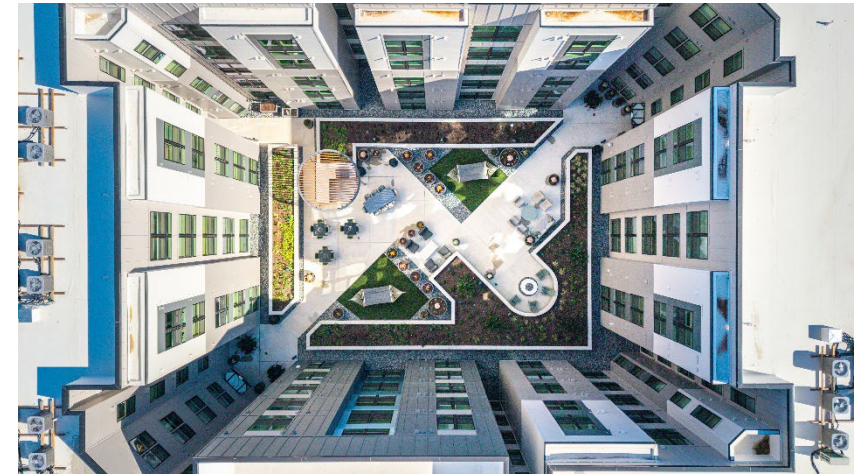


Liberty Center, Georgia Southern University,
Hinesville, GA
Size: 21,000 SF
Construction Cost: \$5M
Role: Architecture, civil + structural engineering
Images courtesy/copyright of Root Photography



The background of the page is a complex, abstract geometric pattern. It consists of numerous thin, light gray lines that intersect to form a series of overlapping, three-dimensional-looking shapes. These shapes resemble architectural elements like columns, beams, and rooflines, creating a sense of depth and perspective. The overall effect is a clean, modern, and architectural aesthetic.

STUDENT HOUSING



Charme on Georgia Ave Mid-Rise Student Housing, Statesboro, GA

Size: 291 units & 694 beds, 2.99 acres

Construction Cost: \$61M

Role: Civil engineering

Images courtesy/copyright of Rael Corp



Victory Village
Savannah College of Art and Design
Savannah, GA
Size: 250,000 SF
Construction Cost: \$54M
Role: Civil engineering
Image courtesy of/copyright Fentress Photography



Mystic Hall, Piedmont University, Demorest, GA
Size: 60,000 SF
Construction Cost: \$9.2M
Role: Architecture

ATHLETICS



Jack and Ruth Ann Hill Convocation Center, Georgia Southern University, Statesboro, GA

Size: 95,000 SF, 19 Acres

Construction Cost: \$64.4M

Role: Civil engineering

Image courtesy of/copyright The Fortune Image



Football Operations Center, Georgia Southern University, Statesboro, GA

Size: 57,000 SF

Construction Cost: \$10M

Role: Civil engineering

Image courtesy of/copyright The Fortune Image

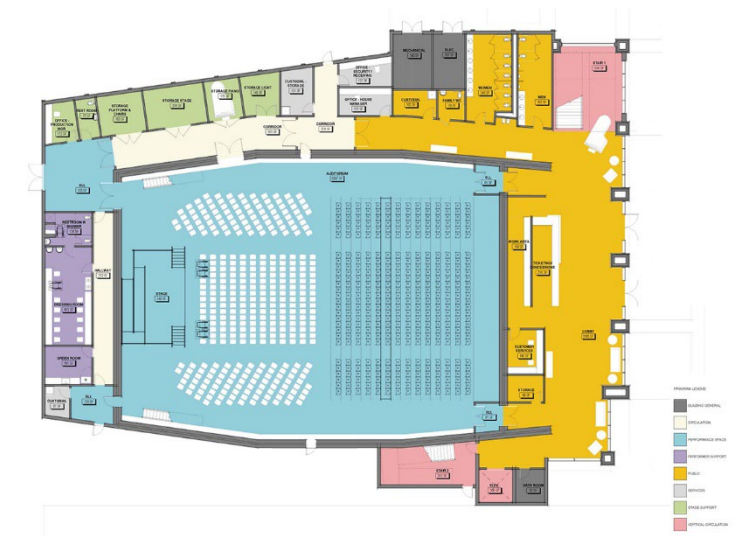


Equestrian Clubhouse, University of Georgia,
Bishop, GA
Size: 7,093 SF
Construction Cost: \$3.1M
Role: Architecture + interiors





OTHER SUPPORTING FACILITIES



Center for the Arts
 College of Coastal Georgia, Brunswick, GA
 Size: 32,328 SF
 Construction Cost: \$16M
 Role: Architecture, Interiors, Civil & Structural Engineering



Savannah Film Studios Redevelopment, Savannah
College of Art and Design, Savannah, GA
Size: 143,437 SF, 8.10 Acres
Construction Cost: \$3.1M
Role: Civil engineering





Georgia Advanced Manufacturing Training Center, Quick Start, Pooler, GA
Construction Cost: \$17.6M
Role: Civil engineering

HUSSEY GAY BELL
Established 1958

