

HUSSEY GAY BELL
— Established 1958 —





FIRM INTRODUCTION

— Our Story



Six Decades of Trusted Design Leadership Across Georgia and Beyond

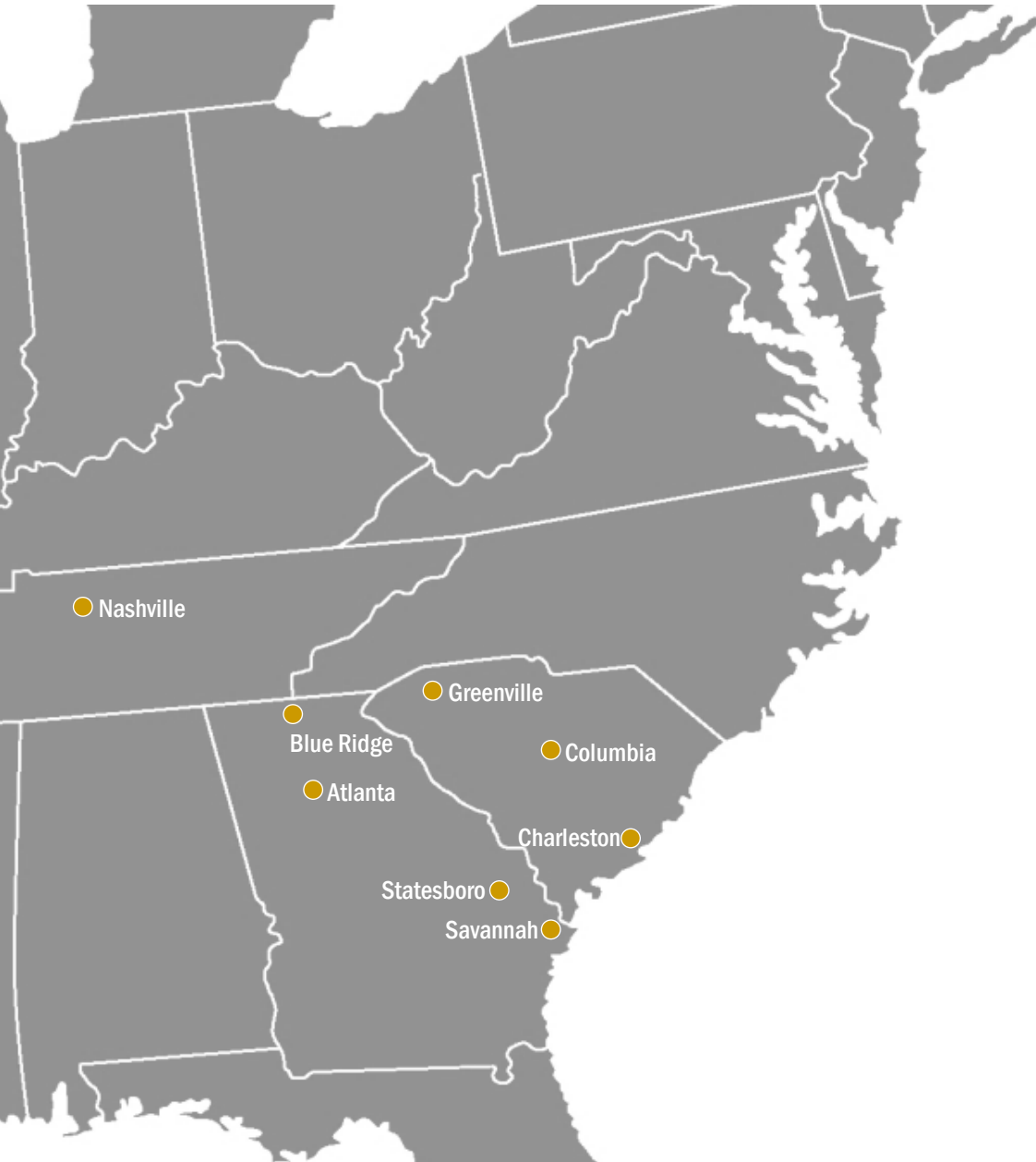
- Innovative, Collaborative Solutions
- Award-Winning Project Delivery
- Community-Centered Leadership

For more than 60 years, Hussey Gay Bell has delivered excellence through innovation, collaboration, and initiative. Our work is defined by trusted client relationships, technical rigor, and a deep commitment to the communities we serve.

Our people are our greatest strength — professionals who uphold the highest standards of service, leadership, and civic engagement.

—G. Holmes Bell IV, PE, CEO & Chairman

Firm Overview



1958

Year of Founding

68

Years in Business

8

Regional Offices

175+

Professionals

12

In-House Disciplines

2025

ENR Top 500 Design Firm

Services

Architecture

Interior Design

Civil Engineering

Transportation Systems Engineering

Water & Wastewater Engineering

Natural Gas Systems Engineering

Environmental Engineering

Structural Engineering

Landscape Architecture

Surveying

Permitting

Construction Management Services

Markets

Commercial

Education

Government

Healthcare

Industrial

Residential

Transportation

Water

EXPERTISE

HOSPITALITY



Shelter Cove Harbour &
Marina
Hilton Head Island, SC
Size: 15.5 Acres
Role: Master Planning,
Civil Engineering & Site
Development



Savannah Convention Center
Expansion, Savannah, GA
Size: 265,000 SF
Role: Civil Engineering & Site
Development

*Rendering used with
permission and courtesy of
prime designer, TVS



Signia by Hilton
Savannah, GA
Size: 460,760 SF
Role: Lead Civil Engineer

*Rendering copyright/courtesy of Savannah Convention Center Authority and development team leads - Songy Highroads and Matthews Hospitality - and lead architecture firm, Cooper Carry.



Homewood Suites by Hilton
Savannah, GA
Size: 162 units
Role: Civil Engineering & Site
Development



CORPORATE OFFICES



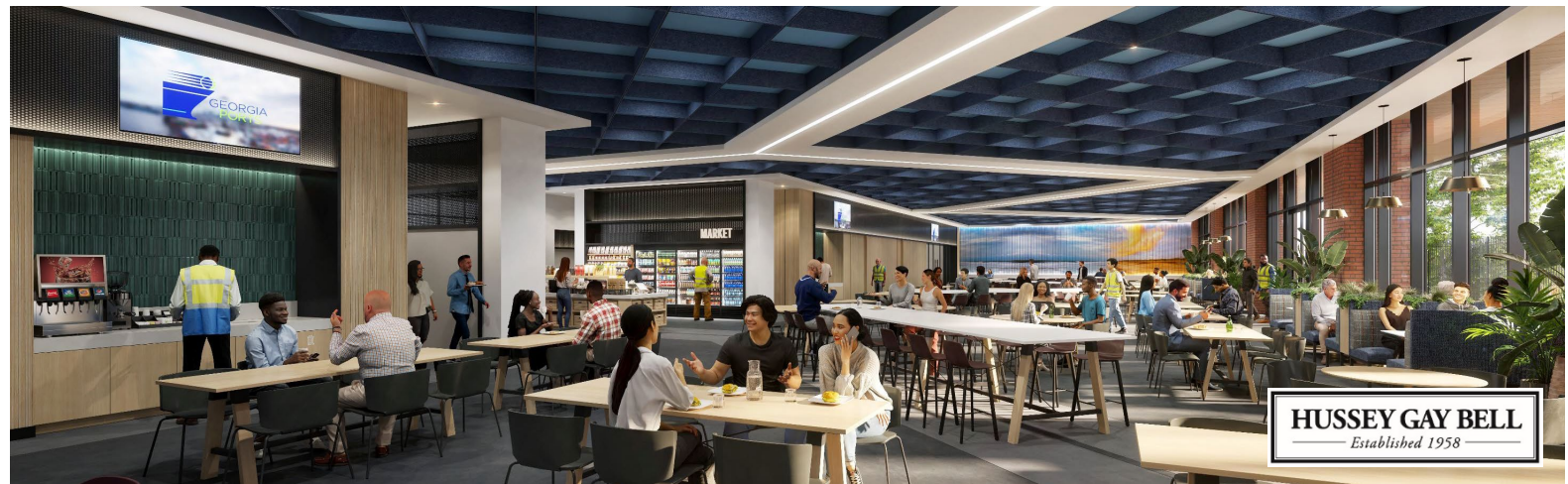
Georgia Ports Authority's Maintenance, Operations & Administration Complex, Garden City Terminal, GA

Size: 286,000 SF

Role: Architect & Engineer of Record

*Rendering used with permission and courtesy of Georgia Ports Authority

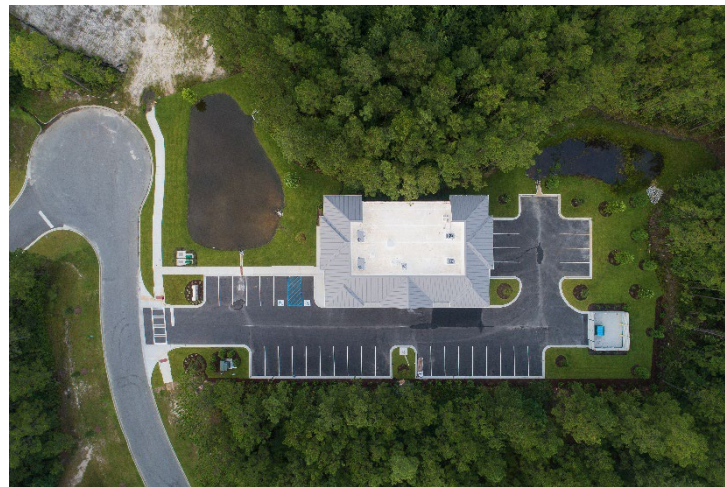








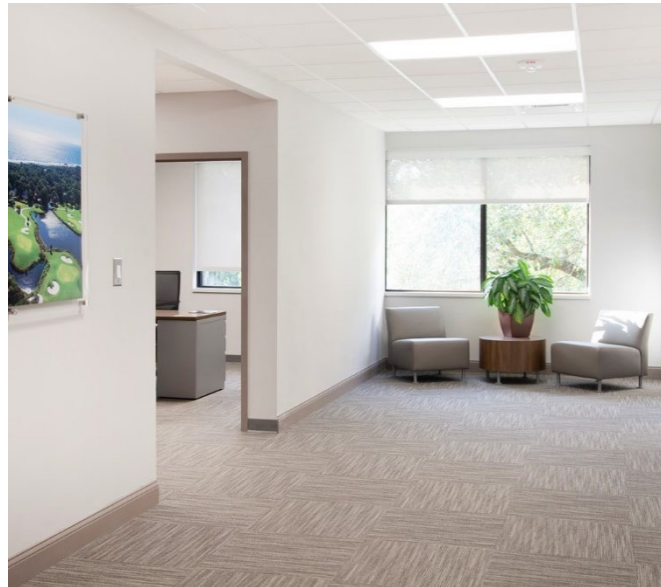
Effingham County Industrial Authority's New Headquarters, Rincon, GA
Size: 30,000 SF
Role: Architect & Engineer of Record



Barlow Office Building at Savannah Quarters
Pooler, GA
Size: 11,000 SF
Role: Architect & Engineer of Record



Hussey Gay Bell HQ Renovation
Savannah, GA
Size: 30,000 SF
Role: Architect & Engineer of Record



DEALERSHIP



J.C. Lewis Ford Dealership & Quick Lane
Service Center, Pooler, GA
Size: 54,500 SF
Role: Architect & Engineer of Record





J.C. Lewis Ford Dealership & Service
Center
Hinesville, GA
Size: 33,700 SF
Role: Architect & Engineer of Record





J.C. Lewis Ford Dealership & Service Center
Statesboro, GA
Size: 30,900 SF
Role: Architect & Engineer of Record





Critz BMW Dealership
Savannah, GA
Size: 34,700 SF
Role: Architect & Engineer of Record





Critz Mercedes Benz Dealership
Savannah, GA
Size: 9,000 SF
Role: Architect & Engineer of Record





Critz Buick-GMC Dealership
Savannah, GA
Size: 4,500 SF
Role: Architect & Engineer of Record





J.C. Lewis Mazda Dealership
Savannah, GA
Size: 2,900 SF
Role: Architect & Engineer of Record

RETAIL



Marketfair Mall
Fayetteville, NC
Role: Civil Engineering & Site
Development



Whole Foods Market West Ashley
Charleston, SC
Role: Civil Engineering & Site
Development





Walmart at Fort Mill Square
Fort Mill, SC
Role: Civil Engineering & Site
Development





Publix at Riverland Market
 Charleston, SC
 Role: Master Planning,
 Site/Civil Engineering,
 Landscape Architecture







Planning and designing for current and future extraordinary places and properties is a long-term commitment.

- Ability to assist the client with master planning and design of the infrastructure needs for large scale developments.
- Relationships and knowledge to provide coordination and guidance to clients for water and sewer strategies and master planning to serve large communities with a range of amenities.
- Experience and knowledge with coastal and lowlands drainage system master planning and design to meet the special requirements of sensitive coastal properties.
- Experience with marsh front and oceanfront projects, and development of marine and amenity improvements located on riverfront properties.
- Proven track record on master planning and design for development in over 10 large scale PUD and master planned communities totaling over 8,000 acres of coastal and near-coastal development.

HUSSEY GAY BELL
— Established 1958 —

