

HUSSEY GAY BELL
— Established 1958 —



FIRM INTRODUCTION

Our Story



G. Holmes Bell, IV, PE
CEO & Chairman

For more than six decades, we at Hussey Gay Bell have remained steadfast in our commitment to providing an enduring legacy of excellence in design and service in the fields of engineering, architecture and surveying.

Our dedication to the firm's core values of innovation, initiation of ideas and collaboration are exemplified through our intense focus on client relations and production of award-winning work. Yet, the true essence of Hussey Gay Bell's strength lies within the talented group of professionals who work tirelessly on our clients' behalf. We at Hussey Gay Bell understand our duty to perform at the highest levels of standards, both professionally and civically, to enhance the quality of life within all of the communities we serve as evidenced by our established history of involvement with civic and charitable organizations and service leadership on industry and community boards. This commitment to excellence extends to every client and to every community we serve. So, here's to the next 60 years.

Firm History



Our Founders Left to Right:
Mr. DeYoung, Mr. Gay, Mr. Bell, Mr. Hussey

<div>1958</div> <div>Founded & Incorporated Civil Engineering Firm In Savannah, GA</div>	<div>1966</div> <div>Gus H. Bell, III, PE Joins Firm</div>	<div>1979</div> <div>Firm Expands with Architecture Studio</div>	<div>1986</div> <div>Gus H. Bell, III, PE Becomes Chairman & CEO</div>
<div>1987</div> <div>Firm Expands to Columbia, SC</div>	<div>1989</div> <div>Firm Expands to Charleston, SC</div>	<div>1994</div> <div>G. Holmes Bell, IV, PE Joins Firm</div>	<div>2012</div> <div>G. Holmes Bell, IV, PE Becomes 3rd Chairman & CEO</div>
<div>2014</div> <div>Firm Moves From Gainesville to Metro Atlanta, GA</div>	<div>2017</div> <div>Firm Expands to Statesboro, GA & Nashville, TN</div>	<div>2018</div> <div>Firm Celebrates 60 Years</div>	<div>2022</div> <div>Firm Acquires Atlanta-Based Hayes James & Opens Greenville, SC, Grows The Family</div>



Key Stats

1958

Year Founded

HQ

Savannah

67

Number of Years
in Business

8

Regional Offices In
Southeast

7

Core Markets

175+

Total Employees

36%

Women/Minority
Employees

12

In-House Disciplines

2025

ENR Top 500 Design Firm

Capabilities

SERVICES


Architecture
Interior Design
Civil Engineering
Transportation Systems Engineering
Water & Wastewater Engineering
Natural Gas Systems Engineering
Environmental Engineering
Structural Engineering
Landscape Architecture
Surveying
Permitting
Construction Management Services

MARKETS

Commercial
Education
Government
Healthcare
Industrial
Residential
Transportation
Water



EXPERTISE



ACADEMIC BUILDINGS, CLASSROOMS
& LABS



Science and Technology Center & Marine Science Center, Savannah State University, Savannah, GA

Size: 47,000 SF

Construction Cost: \$15.6M

Role: Architecture, interiors, civil + structural engineering



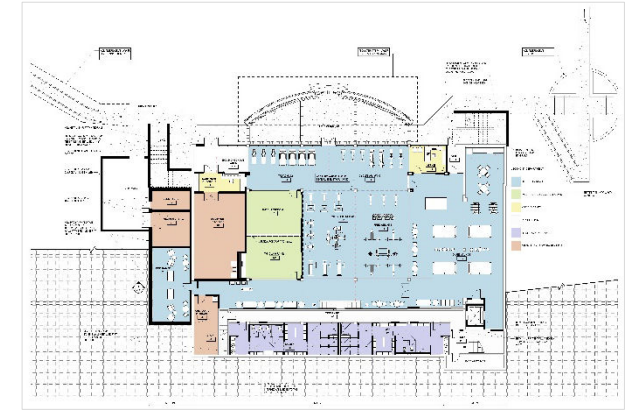


Spearman C. Godsey Science Center, Mercer
University, Macon, GA
Size: 144,000 SF
Role: Architecture, civil + structural engineering
Construction Cost: \$44M





Dr. Mark A Ivester Center for Living and Learning, North Georgia Technical College, Clarksville, GA
 Size: 25,000 SF
 Role: Architecture, civil + structural engineering





Liberty Center, Georgia Southern University,
Hinesville, GA
Size: 21,000 SF
Construction Cost: \$5M
Role: Architecture, civil + structural engineering



STUDENT HOUSING



Victory Village, Savannah College of Art and Design, Savannah, GA
Size: 250,000 SF
Role: Civil engineering
Construction Cost: \$54M

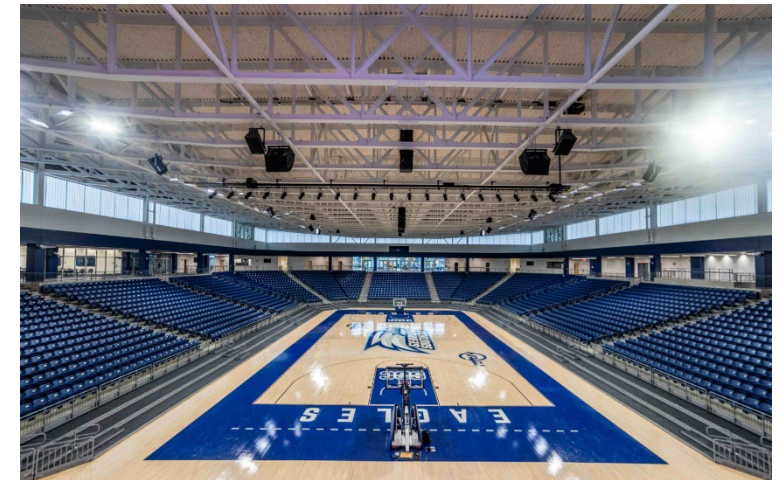


Mystic Hall, Piedmont University, Demorest, GA
Size: 60,000 SF
Role: Architecture
Construction Cost: \$9.2M

ATHLETICS



Jack and Ruth Ann Hill Convocation Center, Georgia Southern University,
Statesboro, GA
Size: 95,000 SF, 19 Acres
Construction Cost: \$64.4M
Role: Civil engineering
Sub to AECOM/LS3P





Football Operations Center, Georgia Southern University, Statesboro, GA
Size: 57,000 SF
Construction Cost: \$10M
Role: Civil engineering



Equestrian Clubhouse, University of Georgia,
Bishop, GA
Size: 7,093 SF
Construction Cost: \$3.1M
Role: Architecture + interiors



OTHER SUPPORTING FACILITIES

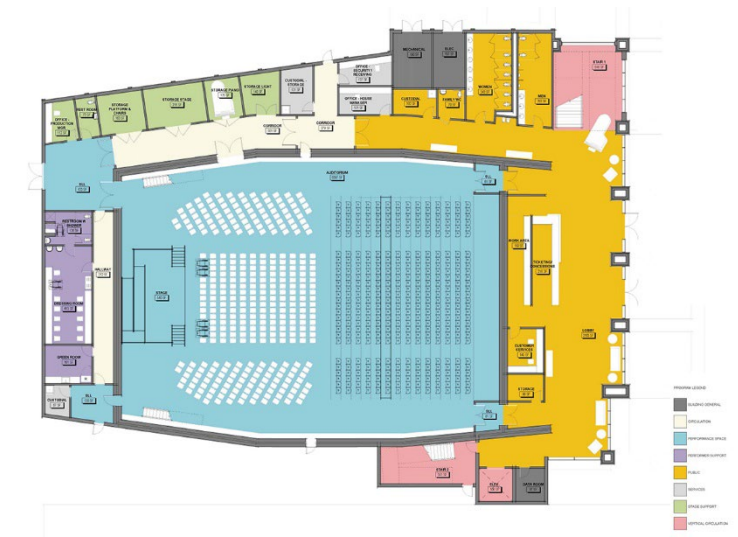


Georgia Advanced Manufacturing Training Center, Quick Start, Pooler, GA
Construction Cost: \$17.6M
Role: Civil engineering



Savannah Film Studios Redevelopment, Savannah
College of Art and Design, Savannah, GA
Size: 143,437 SF, 8.10 Acres
Construction Cost: \$3.1M
Role: Civil engineering





Center for the Arts
 College of Coastal Georgia, Brunswick, GA
 Size: 32,328 SF
 Construction Cost: \$16M
 Role: Architecture, Interiors, Civil & Structural Engineering

HUSSEY GAY BELL
— Established 1958 —

