





FIRM INTRODUCTION

Our Story



G. Holmes Bell, IV, PE
CEO & Chairman

For more than six decades, we at Hussey Gay Bell have remained steadfast in our commitment to providing an enduring legacy of excellence in design and service in the fields of engineering, architecture and surveying.

Our dedication to the firm's core values of innovation, initiation of ideas and collaboration are exemplified through our intense focus on client relations and production of award-winning work. Yet, the true essence of Hussey Gay Bell's strength lies within the talented group of professionals who work tirelessly on our clients' behalf. We at Hussey Gay Bell understand our duty to perform at the highest levels of standards, both professionally and civically, to enhance the quality of life within all of the communities we serve as evidenced by our established history of involvement with civic and charitable organizations and service leadership on industry and community boards. This commitment to excellence extends to every client and to every community we serve. So, here's to the next 60 years.

Firm History



Our Founders Left to Right:
Mr. DeYoung, Mr. Gay, Mr. Bell, Mr. Hussey

<div>1958</div> <div>Founded & Incorporated Civil Engineering Firm In Savannah, GA</div>	<div>1966</div> <div>Gus H. Bell, III, PE Joins Firm</div>	<div>1979</div> <div>Firm Expands with Architecture Studio</div>	<div>1986</div> <div>Gus H. Bell, III, PE Becomes Chairman & CEO</div>
<div>1987</div> <div>Firm Expands to Columbia, SC</div>	<div>1989</div> <div>Firm Expands to Charleston, SC</div>	<div>1994</div> <div>G. Holmes Bell, IV, PE Joins Firm</div>	<div>2012</div> <div>G. Holmes Bell, IV, PE Becomes 3rd Chairman & CEO</div>
<div>2014</div> <div>Firm Moves From Gainesville to Metro Atlanta, GA</div>	<div>2017</div> <div>Firm Expands to Statesboro, GA & Nashville, TN</div>	<div>2018</div> <div>Firm Celebrates 60 Years</div>	<div>2022</div> <div>Firm Acquires Atlanta-Based Hayes James & Opens Greenville, SC, Grows The Family</div>



Key Stats

1958 Year Founded	HQ Savannah	67 Number of Years in Business
8 Regional Offices In Southeast	7 Core Markets	175+ Total Employees
36% Women/Minority Employees	12 In-House Disciplines	2025 ENR Top 500 Design Firm

Capabilities

SERVICES

Architecture
Interior Design
Civil Engineering
Transportation Systems Engineering
Water & Wastewater Engineering
Natural Gas Systems Engineering
Environmental Engineering
Structural Engineering
Landscape Architecture
Surveying
Permitting
Construction Management Services

MARKETS

Commercial
Education
Government
Healthcare
Industrial
Residential
Transportation
Water



EXPERTISE



COMMERCIAL, OFFICE & HOSPITALITY



Shelter Cove Harbour &
Marina
Hilton Head Island, SC
Size: 15.5 Acres
Role: Master Planning,
Civil Engineering & Site
Development



Homewood Suites by Hilton
Savannah, GA
Size: 162 units
Role: Civil Engineering & Site
Development



Savannah Convention Center
Expansion, Savannah, GA
Size: 265,000 SF
Role: Civil Engineering & Site
Development

*Rendering used with
permission and courtesy of
prime designer, TVS



Signia by Hilton
Savannah, GA
Size: 460,760 SF
Role: Lead Civil Engineer

*Rendering copyright/courtesy of
Savannah Convention Center Authority
and development team leads - Songy
Highroads and Matthews Hospitality -
and lead architecture firm, Cooper Carry.



Georgia Ports Authority's Maintenance, Operations & Administration Complex, Garden City Terminal, GA

Size: 286,000 SF

Role: Architect & Engineer of Record

*Rendering used with permission and courtesy of Georgia Ports Authority



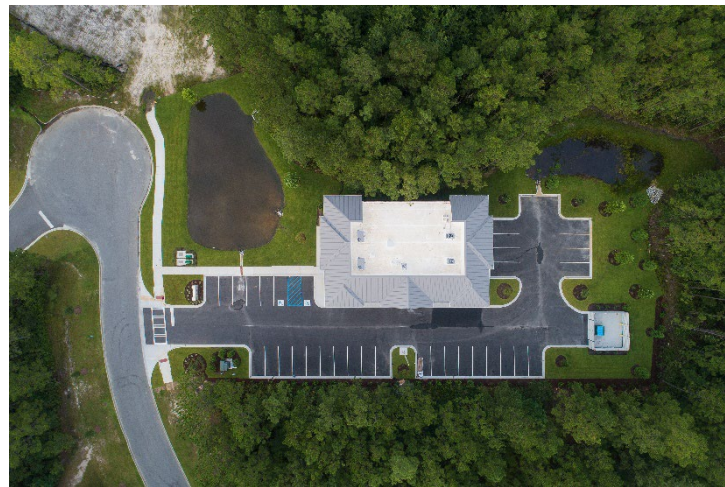






Effingham County Industrial Authority's New Headquarters, Rincon, GA
Size: 30,000 SF
Role: Architect & Engineer of Record





Barlow Office Building at Savannah Quarters
Pooler, GA
Size: 11,000 SF
Role: Architect & Engineer of Record



Hussey Gay Bell HQ Renovation
Savannah, GA
Size: 30,000 SF
Role: Architect & Engineer of Record





J.C. Lewis Ford Dealership & Quick Lane
Service Center, Pooler, GA
Size: 54,500 SF
Role: Architect & Engineer of Record





J.C. Lewis Ford Dealership & Service
Center
Hinesville, GA
Size: 33,700 SF
Role: Architect & Engineer of Record





J.C. Lewis Ford Dealership & Service
Center
Statesboro, GA
Size: 30,900 SF
Role: Architect & Engineer of Record





Critz BMW Dealership
Savannah, GA
Size: 34,700 SF
Role: Architect & Engineer of Record





Critz Mercedes Benz Dealership
Savannah, GA
Size: 9,000 SF
Role: Architect & Engineer of Record





Critz Buick-GMC Dealership
Savannah, GA
Size: 4,500 SF
Role: Architect & Engineer of Record





J.C. Lewis Mazda Dealership
Savannah, GA
Size: 2,900 SF
Role: Architect & Engineer of Record

RETAIL



Marketfair Mall
Fayetteville, NC
Role: Civil Engineering & Site
Development



Whole Foods Market West Ashley
Charleston, SC
Role: Civil Engineering & Site
Development





Walmart at Fort Mill Square
Fort Mill, SC
Role: Civil Engineering & Site
Development





Publix at Riverland Market
Charleston, SC
Role: Master Planning,
Site/Civil Engineering,
Landscape Architecture





