

**HUSSEY GAY BELL**  
*Established 1958*







## FIRM INTRODUCTION

---

# Our Story



G. Holmes Bell, IV, PE  
CEO & Chairman

---

For more than six decades, we at Hussey Gay Bell have remained steadfast in our commitment to providing an enduring legacy of excellence in design and service in the fields of engineering, architecture and surveying.

Our dedication to the firm's core values of innovation, initiation of ideas and collaboration are exemplified through our intense focus on client relations and production of award-winning work. Yet, the true essence of Hussey Gay Bell's strength lies within the talented group of professionals who work tirelessly on our clients' behalf. We at Hussey Gay Bell understand our duty to perform at the highest levels of standards, both professionally and civically, to enhance the quality of life within all of the communities we serve as evidenced by our established history of involvement with civic and charitable organizations and service leadership on industry and community boards. This commitment to excellence extends to every client and to every community we serve. So, here's to the next 60 years.

# Firm History



Our Founders Left to Right:  
Mr. DeYoung, Mr. Gay, Mr. Bell, Mr. Hussey

<div>1958</div> <div>Founded &amp; Incorporated Civil Engineering Firm In Savannah, GA</div>	<div>1966</div> <div>Gus H. Bell, III, PE Joins Firm</div>	<div>1979</div> <div>Firm Expands with Architecture Studio</div>	<div>1986</div> <div>Gus H. Bell, III, PE Becomes Chairman &amp; CEO</div>
<div>1987</div> <div>Firm Expands to Columbia, SC</div>	<div>1989</div> <div>Firm Expands to Charleston, SC</div>	<div>1994</div> <div>G. Holmes Bell, IV, PE Joins Firm</div>	<div>2012</div> <div>G. Holmes Bell, IV, PE Becomes 3<sup>rd</sup> Chairman &amp; CEO</div>
<div>2014</div> <div>Firm Expands to Atlanta, GA</div>	<div>2017</div> <div>Firm Expands to Statesboro, GA &amp; Nashville, TN</div>	<div>2018</div> <div>Firm Celebrates 60 Years</div>	<div>2022</div> <div>Firm Acquires Hayes James, Opens Greenville, SC, Grows The Family</div>



# Key Stats

1958 Year Founded	HQ Savannah	67 Number of Years in Business
8 Regional Offices In Southeast	8 Core Markets	175+ Total Employees
36% Women/Minority Employees	12 In-House Disciplines	2025 ENR Top 500 Design Firm

---

# Capabilities

## SERVICES

Architecture  
Interior Design  
Civil Engineering  
Transportation Systems Engineering  
Water & Wastewater Engineering  
Natural Gas Systems Engineering  
Environmental Engineering  
Structural Engineering  
Landscape Architecture  
Surveying  
Permitting  
Construction Management Services

## MARKETS

Commercial  
Education  
Government  
Healthcare  
Industrial  
Residential  
Transportation  
Water



EXPERTISE

## WASTEWATER TREATMENT





Town of Chapin 2.4 MGD WWTP  
Chapin, SC  
Completion Date: 2020  
Size: 2.4 MGD oxidation ditch type  
plant, new construction







City of Pooler 2.5, 3.3 to 6.223 MGD  
BNR + MBR WWTP  
Pooler, GA  
Completion Date: 2004/2015/2024  
Size: 2.5 MGD, 3.3 MGD, 6.223 MGD





Central Berkeley WWTTP Upgrade to 6.0  
MGD  
Berkeley County, SC  
Completion Date: 2021  
Size: 3.0 MGD expansion of an existing  
oxidation ditch type plant (upgrade from  
existing foreign design)







Statesboro Wastewater Treatment Plant  
 Statesboro, GA  
 Completion Date: 1992, 1996, 2018  
 Size: 10.0 MGD





City of Richmond Hill Sterling Creek 4.0 MGD  
WWTP  
Richmond Hill, GA  
Completion Date: 2016  
Size: 4.0 MGD flat plate membrane BNR plant





Georgetown Water Reclamation Facility  
Savannah, GA  
Completion Date: 1972-2004 (original +  
multiple expansions)  
Size: 2.45 MGD oxidation ditch type



**WATER TREATMENT**



Industrial & Domestic Water Supply Treatment  
 Plant  
 Modifications & Expansions  
 Savannah, GA  
 Completion Date: 1970s/2005 (ongoing  
 projects for 30+ years)  
 Size: 50 MGD plant  
 \*Currently in planning/design for expansion to  
 75 MGD.





Hanahan WTP Expansion, Charleston, SC  
Completion Date: 2030 est. (ongoing projects since 2014)  
Size: 127 MGD plant  
\*Subconsultant to Black & Veatch for civil + survey services  
\*Image courtesy of Black & Veatch



## WATER DISTRIBUTION

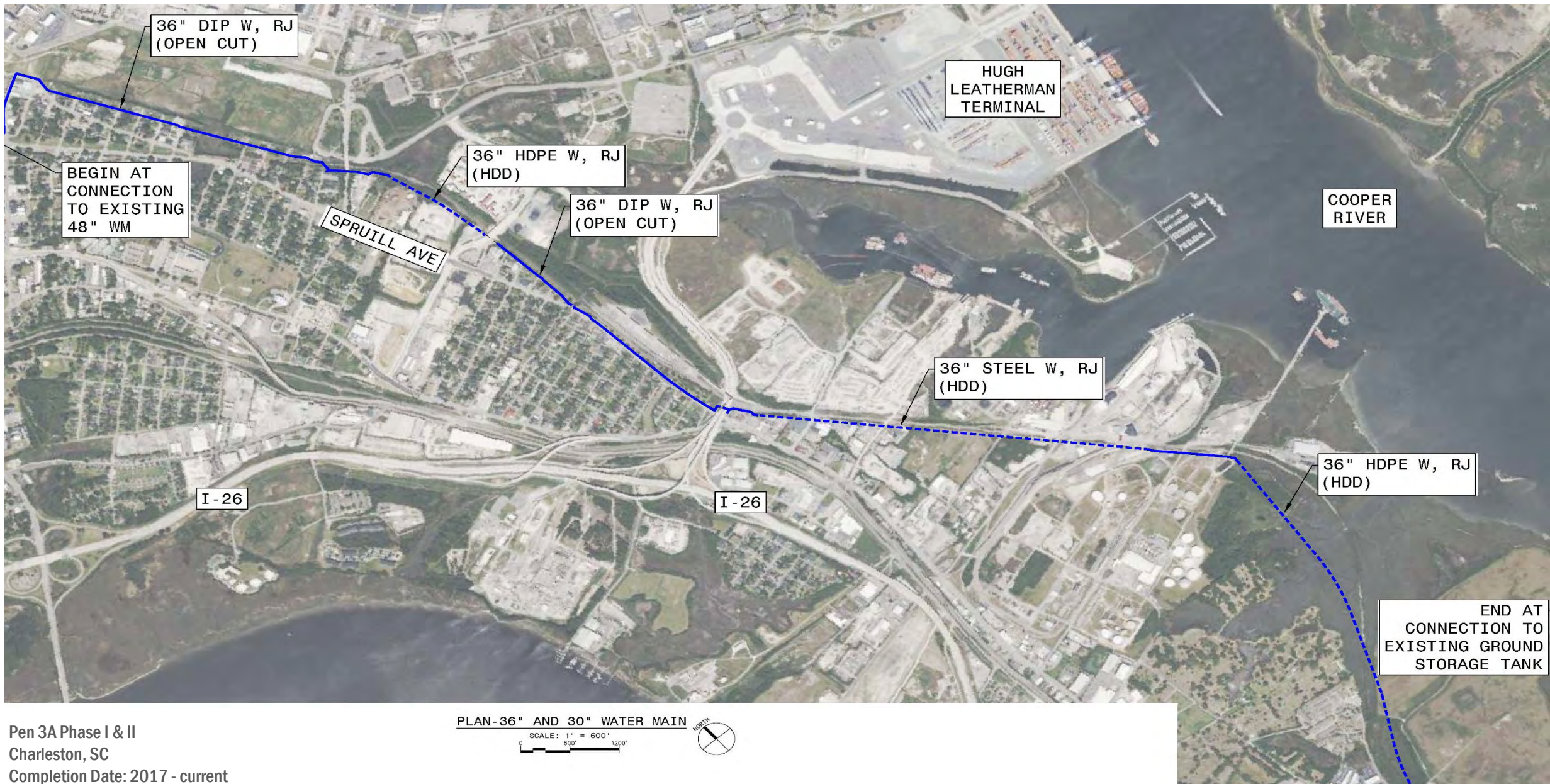




Ashley River Crossing 36" Water  
Transmission Main  
Charleston, SC  
Completion Date: 2018  
Size: 4,700 LF of 36-inch steel waterline  
installed via HDD







Pen 3A Phase I & II  
Charleston, SC

Completion Date: 2017 - current

Size: 16,500 LF of 36" ductile and steel water main; 9,780 LF of 30" ductile iron and steel water main

PLAN-36" AND 30" WATER MAIN

SCALE: 1" = 600'  
0 600' 1200'



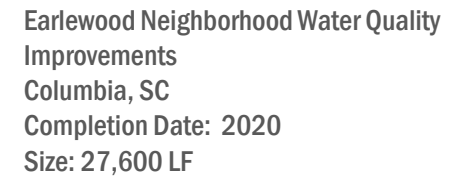




Ben Sawyer/Intracoastal Waterway  
Water Main Crossing  
Sullivan's Island, SC  
Completion Date: 2022  
Size: 5,750 LF of 16" transmission water main









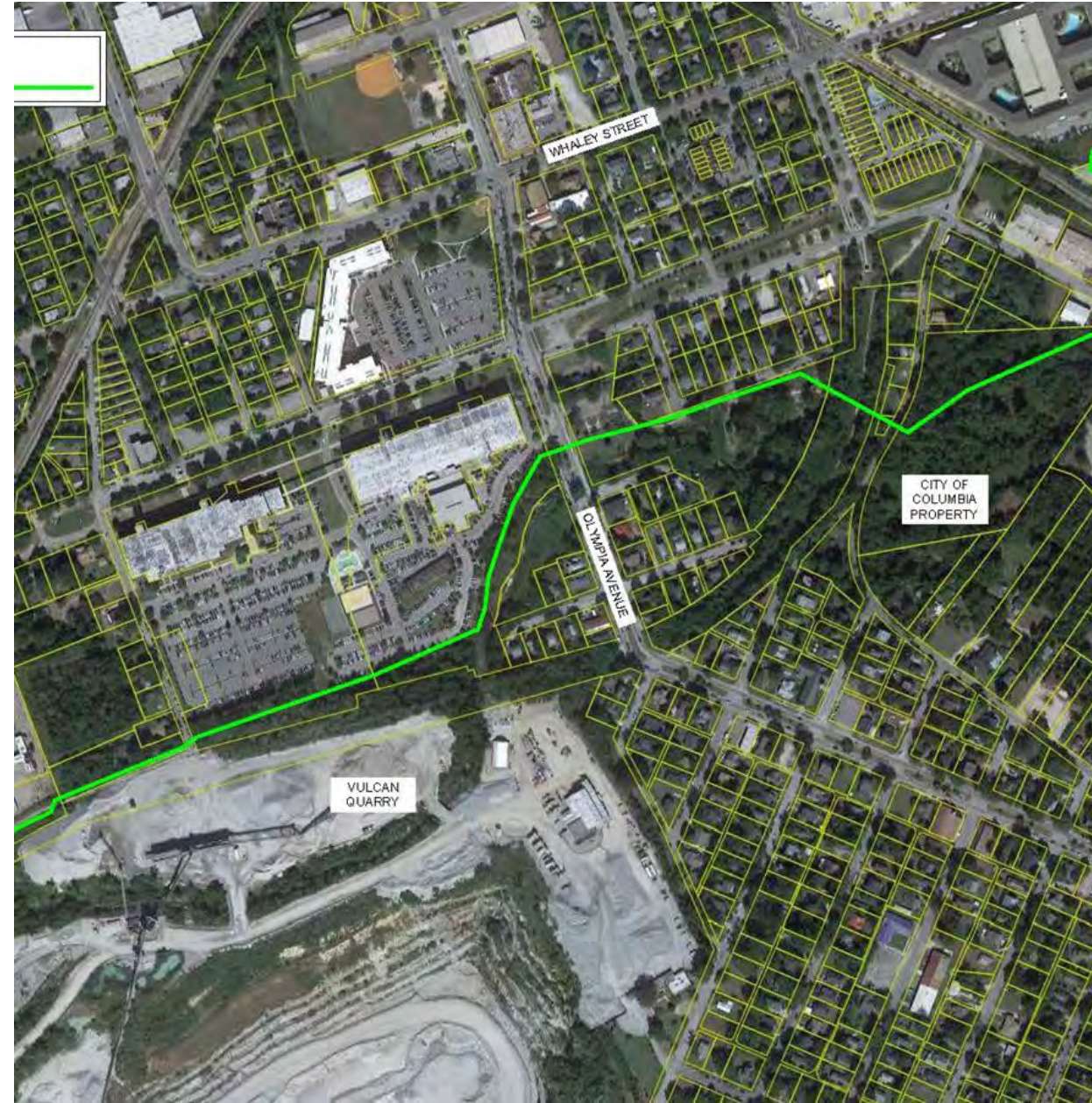


## COLLECTIONS & CONVEYANCE





East Rocky Branch Sewer Improvements,  
Phase II  
Columbia, SC  
Completion Date: 2023  
Size: 4,700 LF of 36-inch gravity; 2,500  
LF of 42-inch gravity







Lift Station 23 Upgrades, Force Main & HDD  
Savannah, GA  
Completion Date: 2023  
Size: 6,000 LF of 30-inch Fusible PVC







Phase V West Ashley Sewer Tunnel & Influent  
Pump Station  
Charleston, SC  
Completion Date: 2022  
Size: 120-foot-deep, 1.6-mile-long tunnel and  
new 60 MGD influent pump station



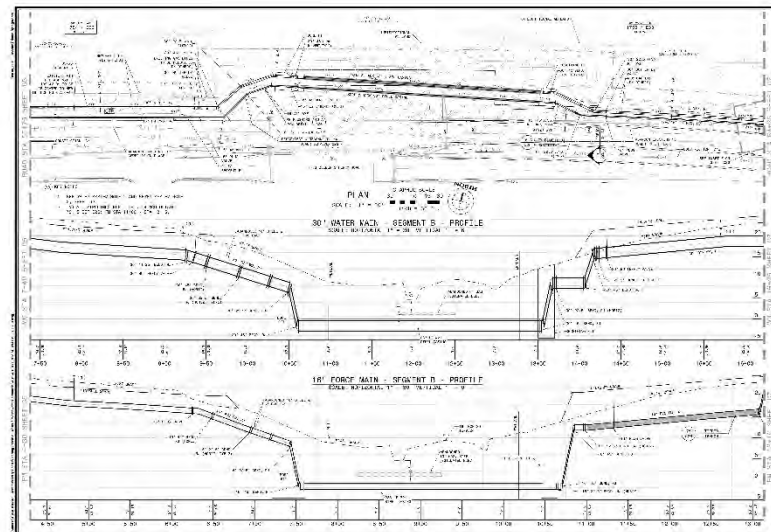
## UTILITY COORDINATION





Charleston Water Systems,  
Port Access Water Main  
Relocations  
Charleston, SC  
Completion Date: 2022  
Size: 24" water mains in  
conflict with Port Access  
Road construction





Charleston Water Systems, Water/Wastewater  
 Utility Relocations for Clements Ferry Road  
 Widening Project  
 Charleston, SC  
 Completion Date: P1 - 2017; P2 - 2024  
 Size: 30" water main and 24" wastewater force  
 main



**HUSSEY GAY BELL**  
*Established 1958*

