



FIRM INTRODUCTION

Our Story



G. Holmes Bell, IV, PE
CEO & Chairman

For more than six decades, we at Hussey Gay Bell have remained steadfast in our commitment to providing an enduring legacy of excellence in design and service in the fields of engineering, architecture and surveying.

Our dedication to the firm's core values of innovation, initiation of ideas and collaboration are exemplified through our intense focus on client relations and production of award-winning work. Yet, the true essence of Hussey Gay Bell's strength lies within the talented group of professionals who work tirelessly on our clients' behalf. We at Hussey Gay Bell understand our duty to perform at the highest levels of standards, both professionally and civically, to enhance the quality of life within all of the communities we serve as evidenced by our established history of involvement with civic and charitable organizations and service leadership on industry and community boards. This commitment to excellence extends to every client and to every community we serve. So, here's to the next 60 years.

Firm History



Our Founders Left to Right:
Mr. DeYoung, Mr. Gay, Mr. Bell, Mr. Hussey

<div>1958</div> <div>Founded & Incorporated Civil Engineering Firm In Savannah, GA</div>	<div>1966</div> <div>Gus H. Bell, III, PE Joins Firm</div>	<div>1979</div> <div>Firm Expands with Architecture Studio</div>	<div>1986</div> <div>Gus H. Bell, III, PE Becomes Chairman & CEO</div>
<div>1987</div> <div>Firm Expands to Columbia, SC</div>	<div>1989</div> <div>Firm Expands to Charleston, SC</div>	<div>1994</div> <div>G. Holmes Bell, IV, PE Joins Firm</div>	<div>2012</div> <div>G. Holmes Bell, IV, PE Becomes 3rd Chairman & CEO</div>
<div>2014</div> <div>Firm Expands to Atlanta, GA</div>	<div>2017</div> <div>Firm Expands to Statesboro, GA & Nashville, TN</div>	<div>2018</div> <div>Firm Celebrates 60 Years</div>	<div>2022</div> <div>Firm Acquires Hayes James, Opens Greenville, SC, Grows The Family</div>



Key Stats

1958

Year Founded

HQ

Savannah

67

Number of Years
in Business

8

Regional Offices In
Southeast

8

Core Markets

175+

Total Employees

36%

Women/Minority
Employees

12

In-House Disciplines

2025

ENR Top 500 Design Firm

Capabilities

SERVICES

Architecture
Interior Design
Civil Engineering
Transportation Systems Engineering
Water & Wastewater Engineering
Natural Gas Systems Engineering
Environmental Engineering
Structural Engineering
Landscape Architecture
Surveying
Permitting
Construction Management Services

MARKETS

Commercial
Education
Government
Healthcare
Industrial
Residential
Transportation
Water



EXPERIENCE



Automotive

Electric Vehicle Manufacturing

Manufacturing

Hyundai Motor Group Metaplant America (HMGMA)
Bryan County, GA
Size: 3,000+ Acres
Role: A-E design services for multiple Tier 1 supplier projects

HUSSEY GAY BELL
Established 1958



Automotive

Electric Vehicle Manufacturing

Manufacturing

Hyundai Mobis BSA 2 and Module Shop @ HMGMA

Bryan County, GA

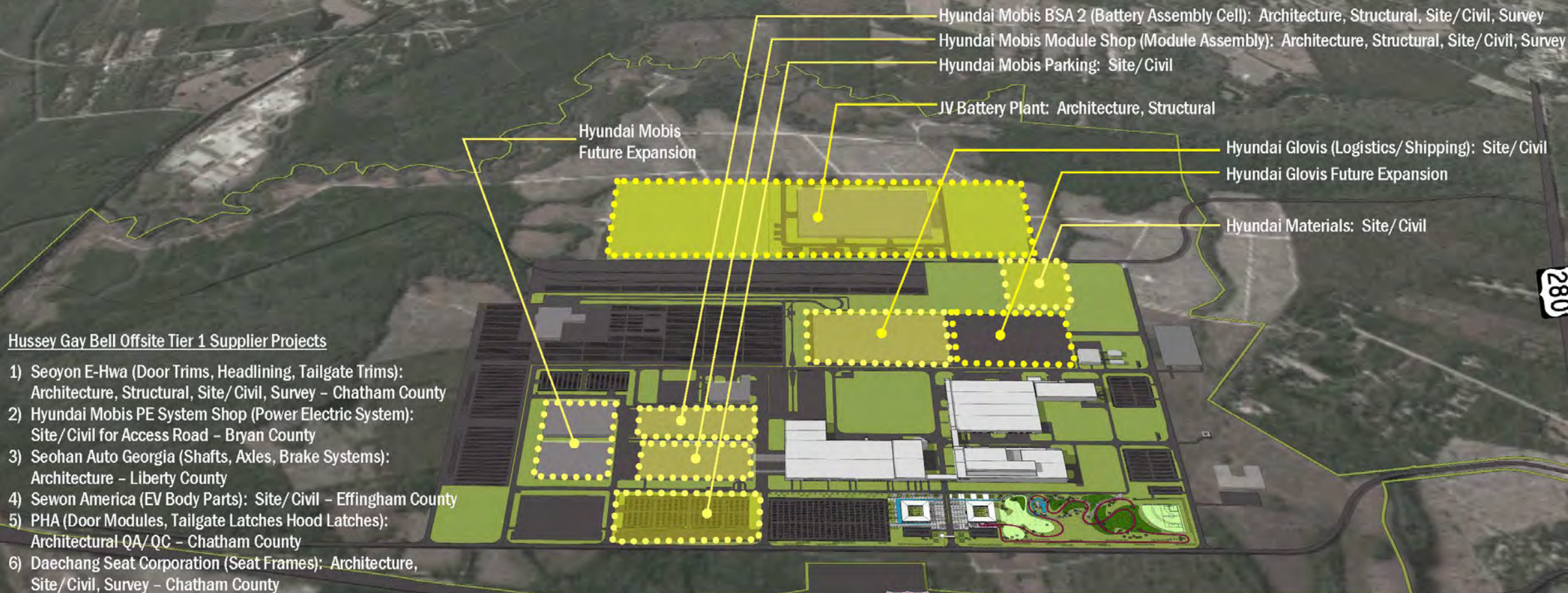
Size: 150 Acres

Role: A-E design services & survey

HUSSEY GAY BELL
Established 1958

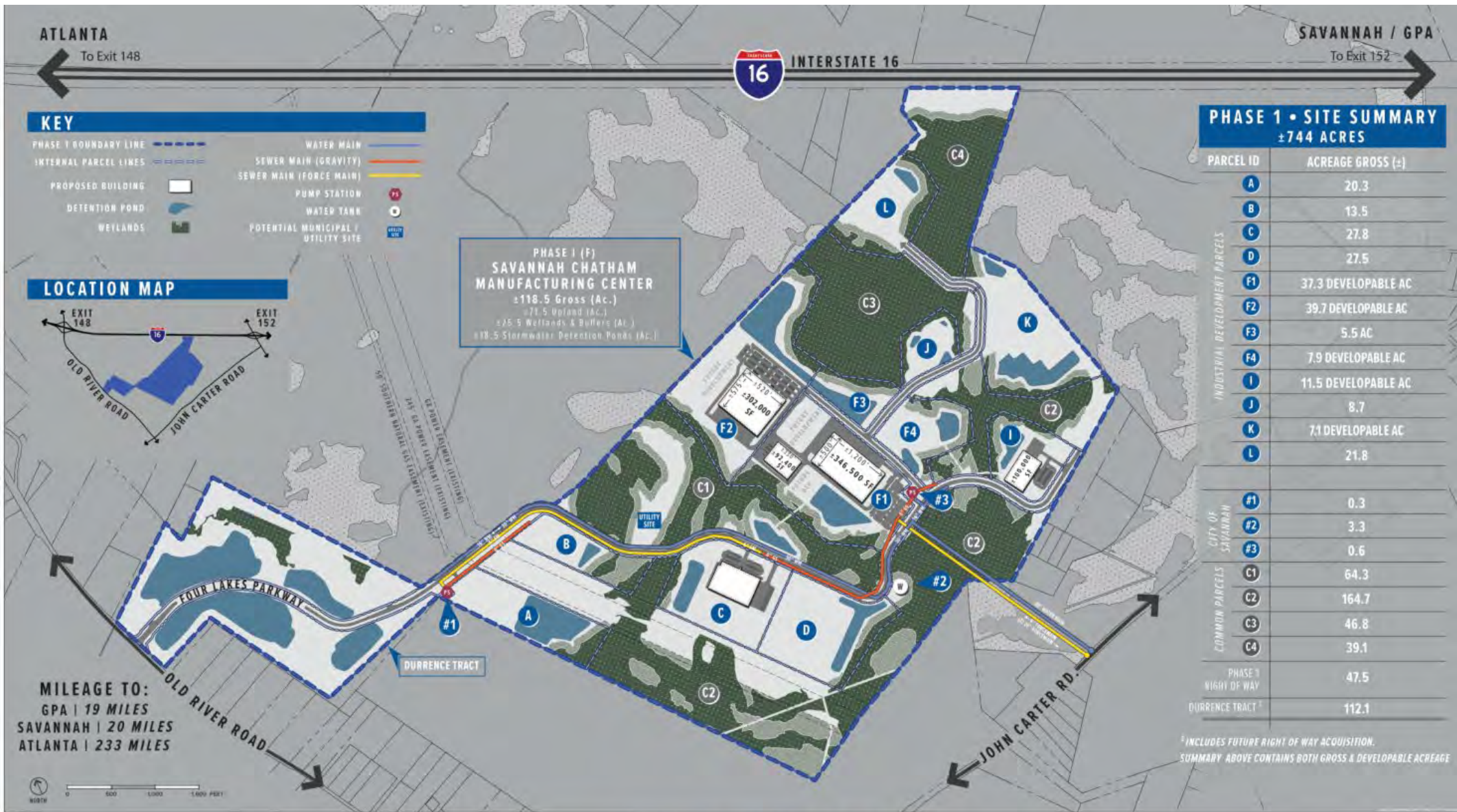
Hyundai Motor Group Metaplant America, Bryan County, GA

Hussey Gay Bell On-Site Tier 1 Supplier Projects Exhibit



HUSSEY GAY BELL
— Established 1958 —

HUSSEY GAY BELL
— Established 1958 —



Savannah Chatham
Manufacturing Center
Chatham County, GA
Size: 744 Acres
Role: Due-Diligence, Lead
Utilities Engineer, Multiple
Tier 1 Supplier Projects

Automotive
Manufacturing



Automotive

Manufacturing

Seoyon E-Hwa Manufacturing Facility
Savannah Chatham Manufacturing Center
Chatham County, GA
Role: Lead Architect/Engineer

HUSSEY GAY BELL
Established 1958



Headquarters

Manufacturing

J. C. Bamford North America Headquarters
Tract, Pooler, GA
Size: 1,100 Acres, 500,000+ SF
Role: Due-Diligence, Lead Architect/Engineer

HUSSEY GAY BELL
Established 1958



Aerospace

Manufacturing

Boeing 787 Manufacturing Facility Master
Planning & Design, Charleston, SC
Size: 240 Acres
Role: Due-Diligence, Civil Engineering

HUSSEY GAY BELL
Established 1958



Logistics & Supply Chain

NFI Industries Transload & Cross-Dock Facility at
Georgia Ports, Port Wentworth, GA
Size: 300,000 SF
Role: Lead Architect/Engineer



331 Acres



Automotive

Manufacturing

GA Highway 257 Rail-Served Site

Dublin-Laurens County, GA

Size: 331 Acres

Role: Due-Diligence, Lead Civil Engineer & Surveyor

HUSSEY GAY BELL
Established 1958





Automotive

Manufacturing

Seohan Auto Georgia Manufacturing Facility
Tradeport East Business Center, Midway, GA
Size: 298,000 SF
Role: Lead Architect

HUSSEY GAY BELL
Established 1958



Automotive

Manufacturing

Grande View Tract, Effingham County, GA
Size: 448 Acres
Role: Role: Due-Diligence, Lead Civil Engineer & Surveyor

HUSSEY GAY BELL
Established 1958

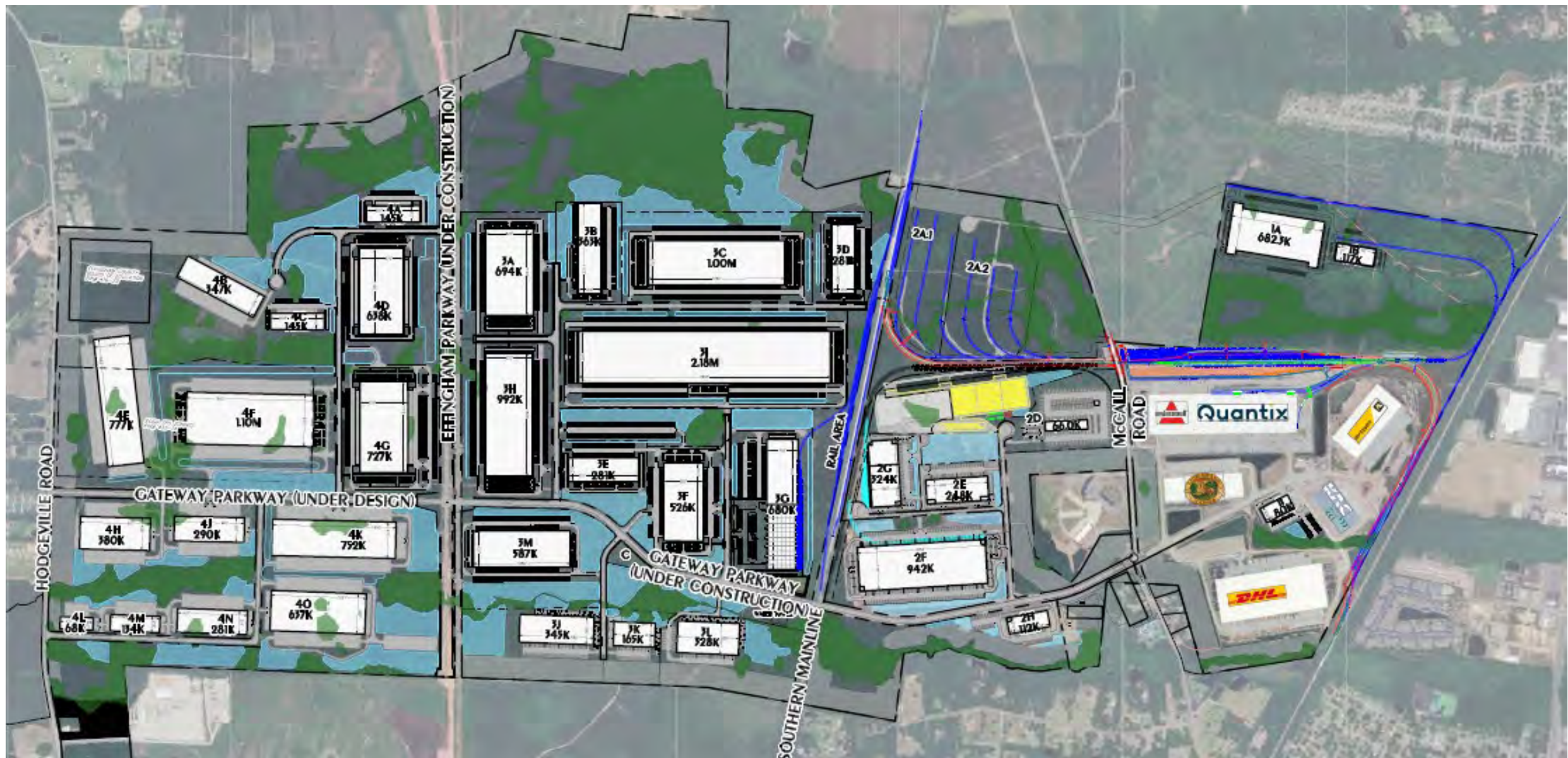


Automotive

Manufacturing

Sewon America
Grande View Tract, Effingham County, GA
Role: Lead Civil Engineer

HUSSEY GAY BELL
Established 1958



Logistics & Supply Chain

Savannah Gateway Industrial Hub, Effingham County, GA

Size: 2,600 Acres

Role: Due-Diligence & full A-E designs for multiple end users



Logistics & Supply Chain

A&R Logistics (Quantix) at Savannah Gateway Industrial Hub
Rincon, GA
Size: 1,400,000 SF
Role: Lead Architect/Engineer

HUSSEY GAY BELL
Established 1958



Logistics & Supply Chain

Manufacturing

Belfast Commerce Park at Heartwood, Bryan County, GA

Size: 1,040 Acres

Role: Due-Diligence & full A-E designs for multiple end users

HUSSEY GAY BELL
Established 1958



Logistics & Supply Chain

Brown Thrasher Logistics Center Warehouse at Belfast Commerce Park at Heartwood, Bryan County, GA

Size: 281,067 SF

Role: Lead Civil Engineer

HUSSEY GAY BELL
Established 1958



Logistics & Supply Chain

Hooker Furnishings at Tradeport East Business Center, Midway, GA
Size: 1,000,000 SF
Role: Lead Architect/Engineer



Aerospace

Headquarters

Gulfstream Building Z
Savannah, GA
Size: 440,000 SF
Role: Lead Civil Engineer



Gulfstream Wing Assembly Bldg
Savannah, GA
Size: 223,615 SF
Role: Lead Architect/Engineer



Aerospace

Headquarters



