





FIRM INTRODUCTION

Our Story



G. Holmes Bell, IV, PE
CEO & Chairman

For more than six decades, we at Hussey Gay Bell have remained steadfast in our commitment to providing an enduring legacy of excellence in design and service in the fields of engineering, architecture and surveying.

Our dedication to the firm's core values of innovation, initiation of ideas and collaboration are exemplified through our intense focus on client relations and production of award-winning work. Yet, the true essence of Hussey Gay Bell's strength lies within the talented group of professionals who work tirelessly on our clients' behalf. We at Hussey Gay Bell understand our duty to perform at the highest levels of standards, both professionally and civically, to enhance the quality of life within all of the communities we serve as evidenced by our established history of involvement with civic and charitable organizations and service leadership on industry and community boards. This commitment to excellence extends to every client and to every community we serve. So, here's to the next 60 years.

Firm History



Our Founders Left to Right:
Mr. DeYoung, Mr. Gay, Mr. Bell, Mr. Hussey

<div>1958</div> <div>Founded & Incorporated Civil Engineering Firm In Savannah, GA</div>	<div>1966</div> <div>Gus H. Bell, III, PE Joins Firm</div>	<div>1979</div> <div>Firm Expands with Architecture Studio</div>	<div>1986</div> <div>Gus H. Bell, III, PE Becomes Chairman & CEO</div>
<div>1987</div> <div>Firm Expands to Columbia, SC</div>	<div>1989</div> <div>Firm Expands to Charleston, SC</div>	<div>1994</div> <div>G. Holmes Bell, IV, PE Joins Firm</div>	<div>2012</div> <div>G. Holmes Bell, IV, PE Becomes 3rd Chairman & CEO</div>
<div>2014</div> <div>Firm Expands to Atlanta, GA</div>	<div>2017</div> <div>Firm Expands to Statesboro, GA & Nashville, TN</div>	<div>2018</div> <div>Firm Celebrates 60 Years</div>	<div>2022</div> <div>Firm Acquires Hayes James, Opens Greenville, SC, Grows The Family</div>



Key Stats

1958

Year Founded

HQ

Savannah

66

Number of Years
in Business

8

Regional Offices In
Southeast

7

Core Markets

175+

Total Employees

36%

Women/Minority
Employees

12

In-House Disciplines

2024

ENR Top 500 Design Firm
ENR Top Southeast Design
Firm

Capabilities

SERVICES

Architecture
Interior Design
Civil Engineering
Transportation Systems Engineering
Water & Wastewater Engineering
Natural Gas Systems Engineering
Environmental Engineering
Structural Engineering
Landscape Architecture
Surveying
Permitting
Construction Management Services

MARKETS

Commercial & Residential
Education
Government
Healthcare
Industrial
Transportation
Water



EXPERTISE



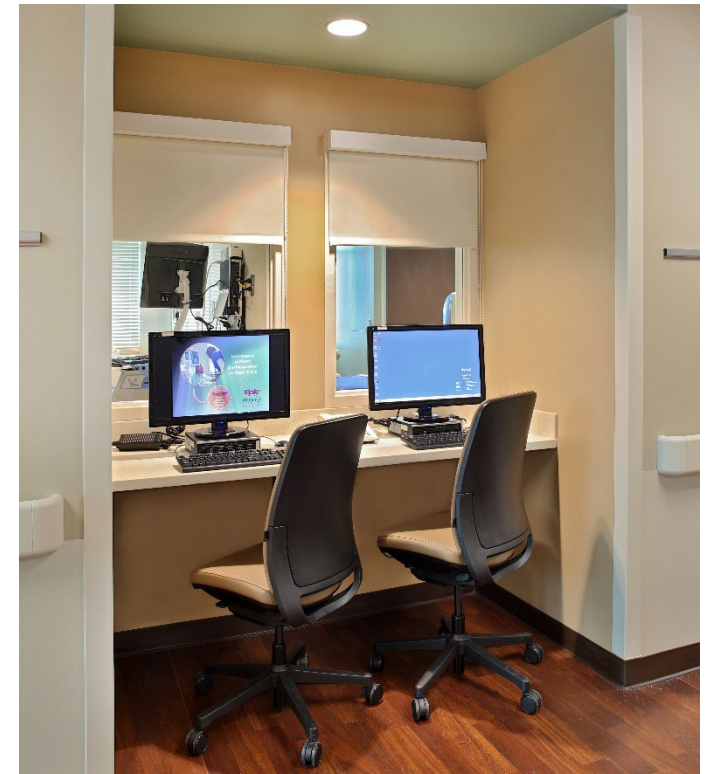
ACUTE CARE



Northside Hospital Gwinnett
New Patient Tower
Lawrenceville, GA
Size: 132-Bed, 10-Story
Role: Civil engineering + surveying



Bishop Gadsden, Health & Rehab Center
Charleston, SC
Size: 161,000 SF
Role: Civil engineering



HCA's Memorial Health, 5th Floor Heart
& Vascular ICU Renovation
Savannah, GA
Size: 25,000 SF
Role: Architecture





HCA's Memorial Health Parker's Emergency & Trauma
Center, Savannah, GA
Size: 42,335 SF
Role: Civil engineering + survey
Rendering by prime consultant, Batson Associates





MEDICAL OFFICE BUILDINGS



Terrace Park Medical Office Building, Lawrenceville, GA*

Size: 127,442 SF

Role: Civil engineering + surveying

*Indicates Hayes James project which was acquired by Hussey Gay Bell in 2022.



Hall County Health Department MOB Gainesville, GA

Size: 8,000 SF

Role: Civil engineering + surveying

Sub to CDH



Northeast Georgia Physician's Group MOB & Urgent Care Center, Dacula, GA

Size: 9,534 SF

Role: Architecture



Northeast Georgia Physician's Group MOB, West Jackson, GA

Size: 9,000 SF

Role: Civil engineering



Northeast Georgia Physician's Group MOB, Cleveland, GA

Size: 8,000 SF

Role: Architecture



Northeast Georgia Physician's Group MOB, Hamilton Mill, GA

Size: 8,650 SF

Role: Architecture



Veterans Affairs Outpatient Care Center, Anderson, SC

Size: 71,000 SF

Role: Architecture, civil + structural engineering





Veterans Affairs Primary Outpatient Clinic, Hinesville, GA
Size: 32,000 SF
Role: Architecture, civil + structural engineering





Union General Hospital MOB, Blairsville, GA
Size: 40,000 SF
Role: Civil engineering + surveying
Sub to CDH



Good News Clinic, Gainesville, GA



PUBLIC HEALTH



Chatham County Health Department, Savannah, GA

Size: 40,000 SF

Role: Civil engineering

Sub to GMSHAY

HUSSEY GAY BELL
Established 1958



Beaufort-Jasper Hampton Comprehensive Health Services, Inc., St. Helena Medical Center (Leroy E. Browne Medical Center) Upfit, Saint Helena Island, SC
Role: Architecture + interiors
Original also designed by Principal Architect, Chris Caudle, AIA, prior to joining the firm



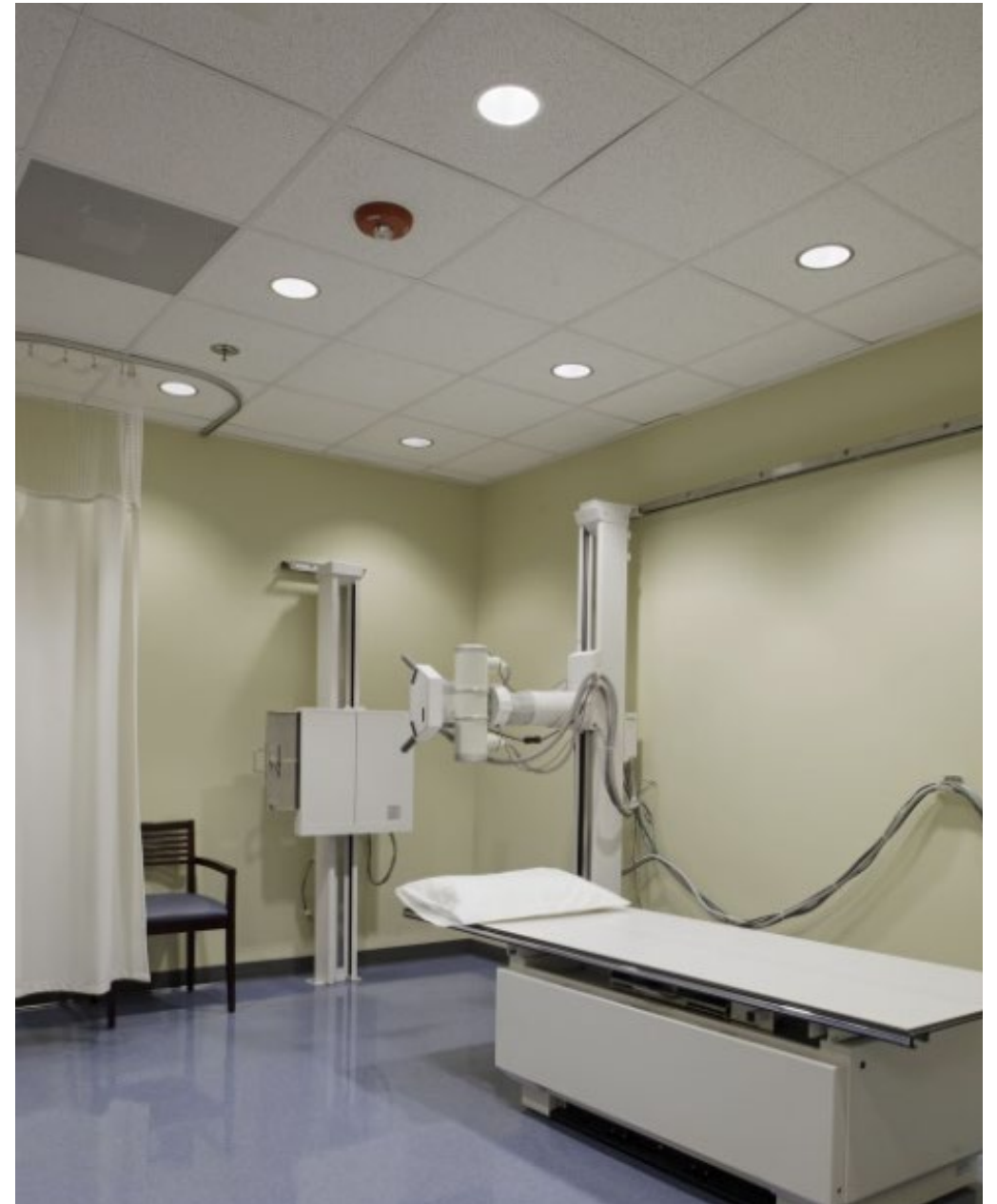
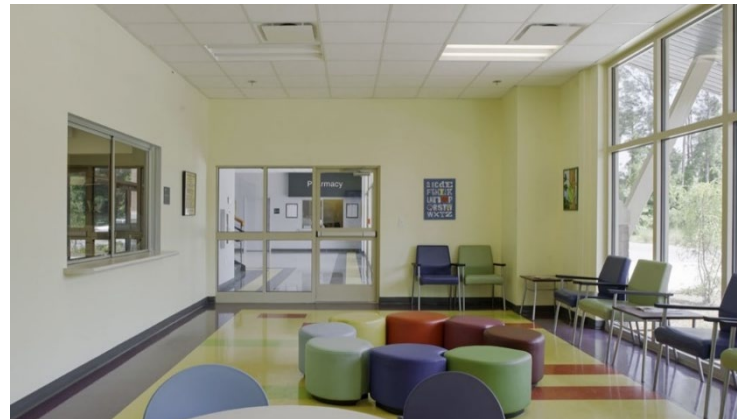
Beaufort-Jasper Hampton Comprehensive Health Services, Inc., Interior Renovations to
Port Royal Medical Center, Port Royal, SC
Role: Architecture + interiors
Original also designed by Principal Architect, Chris Caudle, AIA, prior to joining the firm



Beaufort-Jasper Hampton Comprehensive Health Services, Inc., Chelsea Medical Center
(Ruth P. Field Medical Center) Renovation, Okatie, SC

Role: Architecture + interiors

Original also designed by Principal Architect, Chris Caudle, AIA, prior to joining the firm



BEHAVIORAL HEALTH



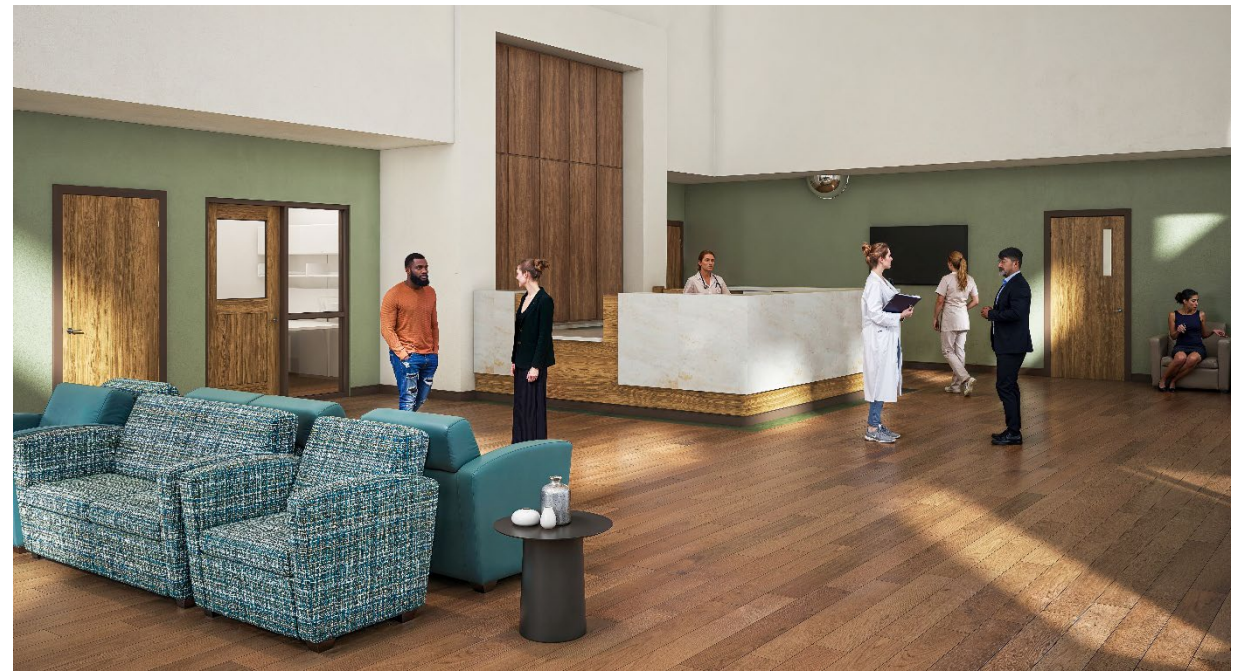
Community Service Board of Middle Georgia New Behavioral Health Crisis Center

Dublin, GA

Size: 31,245 SF

Role: Architecture, Civil, Structural

HUSSEY GAY BELL
Established 1958





Claratel Behavioral Health, Behavioral Health Crisis Center, DeKalb County, GA
Size: 46,440 SF
Role: Architecture, civil + structural



Avita Community Partners, Behavioral Health Crisis Center, Gainesville, GA

Size: 28,000 SF

Role: Architecture



