

HUSSEY GAY BELL
— Established 1958 —





FIRM INTRODUCTION

Our Story



G. Holmes Bell, IV, PE
CEO & Chairman

For more than six decades, we at Hussey Gay Bell have remained steadfast in our commitment to providing an enduring legacy of excellence in design and service in the fields of engineering, architecture and surveying.

Our dedication to the firm's core values of innovation, initiation of ideas and collaboration are exemplified through our intense focus on client relations and production of award-winning work. Yet, the true essence of Hussey Gay Bell's strength lies within the talented group of professionals who work tirelessly on our clients' behalf. We at Hussey Gay Bell understand our duty to perform at the highest levels of standards, both professionally and civically, to enhance the quality of life within all of the communities we serve as evidenced by our established history of involvement with civic and charitable organizations and service leadership on industry and community boards. This commitment to excellence extends to every client and to every community we serve. So, here's to the next 60 years.

Firm History



Our Founders Left to Right:
Mr. DeYoung, Mr. Gay, Mr. Bell, Mr. Hussey

<p>1958 Founded & Incorporated Civil Engineering Firm In Savannah, GA</p>	<p>1966 Gus H. Bell, III, PE Joins Firm</p>	<p>1979 Firm Expands with Architecture Studio</p>	<p>1986 Gus H. Bell, III, PE Becomes Chairman & CEO</p>
<p>1987 Firm Expands to Columbia, SC</p>	<p>1989 Firm Expands to Charleston, SC</p>	<p>1994 G. Holmes Bell, IV, PE Joins Firm</p>	<p>2012 G. Holmes Bell, IV, PE Becomes 3rd Chairman & CEO</p>
<p>2014 Firm Moves From Gainesville to Metro Atlanta, GA</p>	<p>2017 Firm Expands to Statesboro, GA & Nashville, TN</p>	<p>2018 Firm Celebrates 60 Years</p>	<p>2022 Firm Acquires Atlanta-Based Hayes James & Opens Greenville, SC, Grows The Family</p>



Key Stats

1958

Year Founded

HQ

Savannah

66

Number of Years
in Business

8

Regional Offices In
Southeast

7

Core Markets

175+

Total Employees

36%

Women/Minority
Employees

12

In-House Disciplines

2024

ENR Top 500 Design Firm
ENR Top Southeast Design
Firm

Capabilities

SERVICES

Architecture

Interior Design

Civil Engineering

Transportation Systems Engineering

Water & Wastewater Engineering

Natural Gas Systems Engineering

Environmental Engineering

Structural Engineering

Landscape Architecture

Surveying

Permitting

Construction Management Services

MARKETS

Commercial & Residential

Education

Government

Healthcare

Industrial

Transportation

Water

The background features a complex, abstract geometric pattern of thin white lines on a dark gray background. The lines intersect to form various shapes, including triangles, rectangles, and irregular polygons, creating a sense of depth and architectural structure. The pattern is most dense on the right side of the page and becomes sparser towards the left.

EXPERTISE



PUBLIC SAFETY & JUDICIAL



Toombs County Justice Center
Lyons, GA
Size: 68,000 SF
Role: Lead architect/engineer



Toombs County Justice Center
Lyons, GA
Size: 68,000 SF
Role: Lead architect/engineer



Toombs County Justice Center
Lyons, GA
Size: 68,000 SF
Role: Lead architect/engineer



Municipal Complex
Pooler, GA
Size: 51,500 SF
Role: Lead architect/engineer





Municipal Complex
Pooler, GA
Size: 51,500 SF
Role: Lead architect/engineer



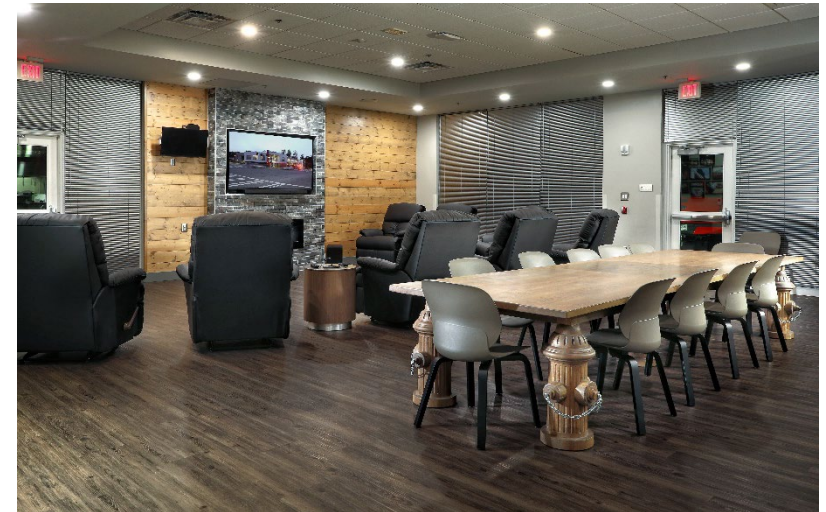
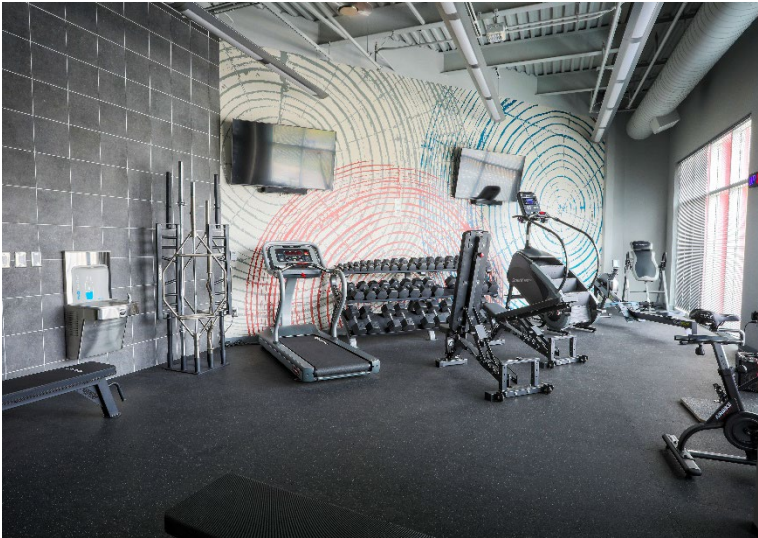
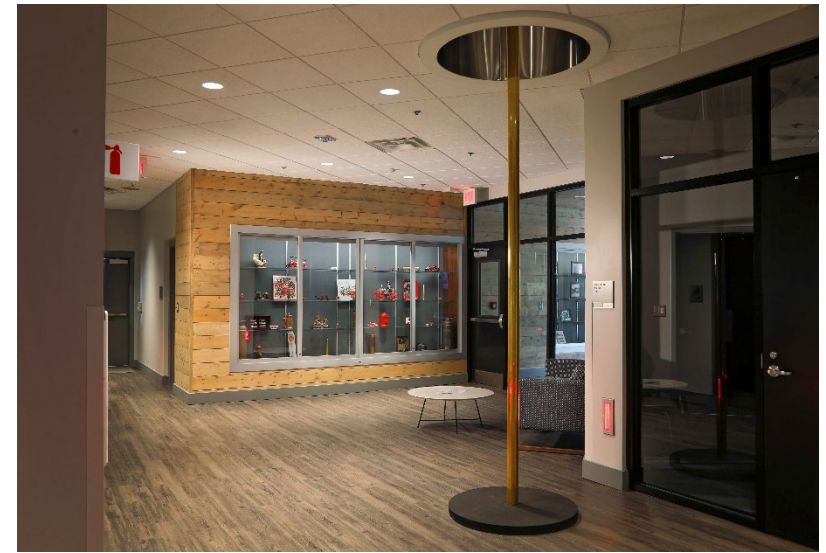


Tomochichi U.S. Courthouse Annex
Savannah, GA
Size: 37,000 SF
Role: Lead civil engineer



Historic Courthouse Renovation
Effingham County, GA
Size: 16,000 SF
Role: Lead architect/engineer





Fire Station No. 2
Sandy Springs, GA
Size: 21,443 SF
Role: Lead architect/engineer



Fire Station No. 5
Sandy Springs, GA
Size: 11,638 SF
Role: Lead architect/engineer



Forsyth County
Fire Stations No. 6 and No. 8
Cumming, GA
Size: 12,455 SF
Role: Lead architect/engineer



Fire Station No. 2
Beaufort, SC
Size: 10,000 SF
Role: Lead architect/engineer



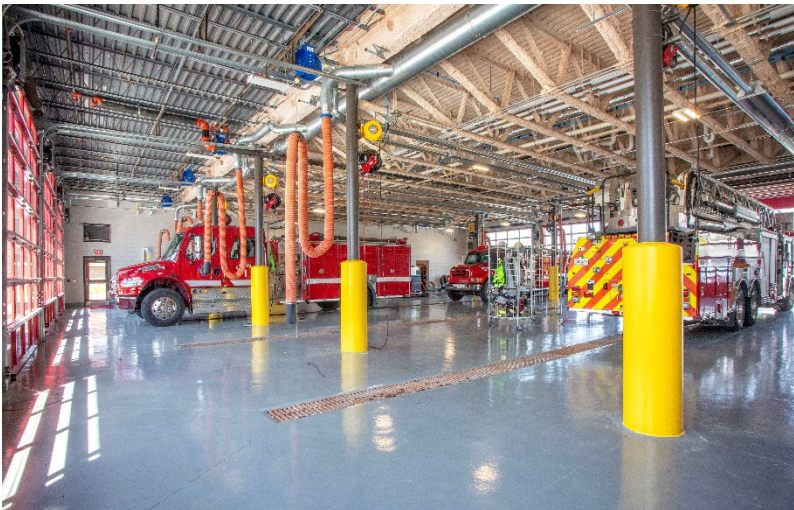
Hall County Sheriff's Office
Gainesville, GA
Size: 50,000 SF
Role: Lead architect/engineer



Hall County Fire Station No. 1
Gainesville, GA
Size: 9.307 SF
Role: Lead architect/engineer



Fire Station No. 1 and Administration Facility
Hinesville, GA
Size: 17,000 SF
Role: Lead architect/engineer

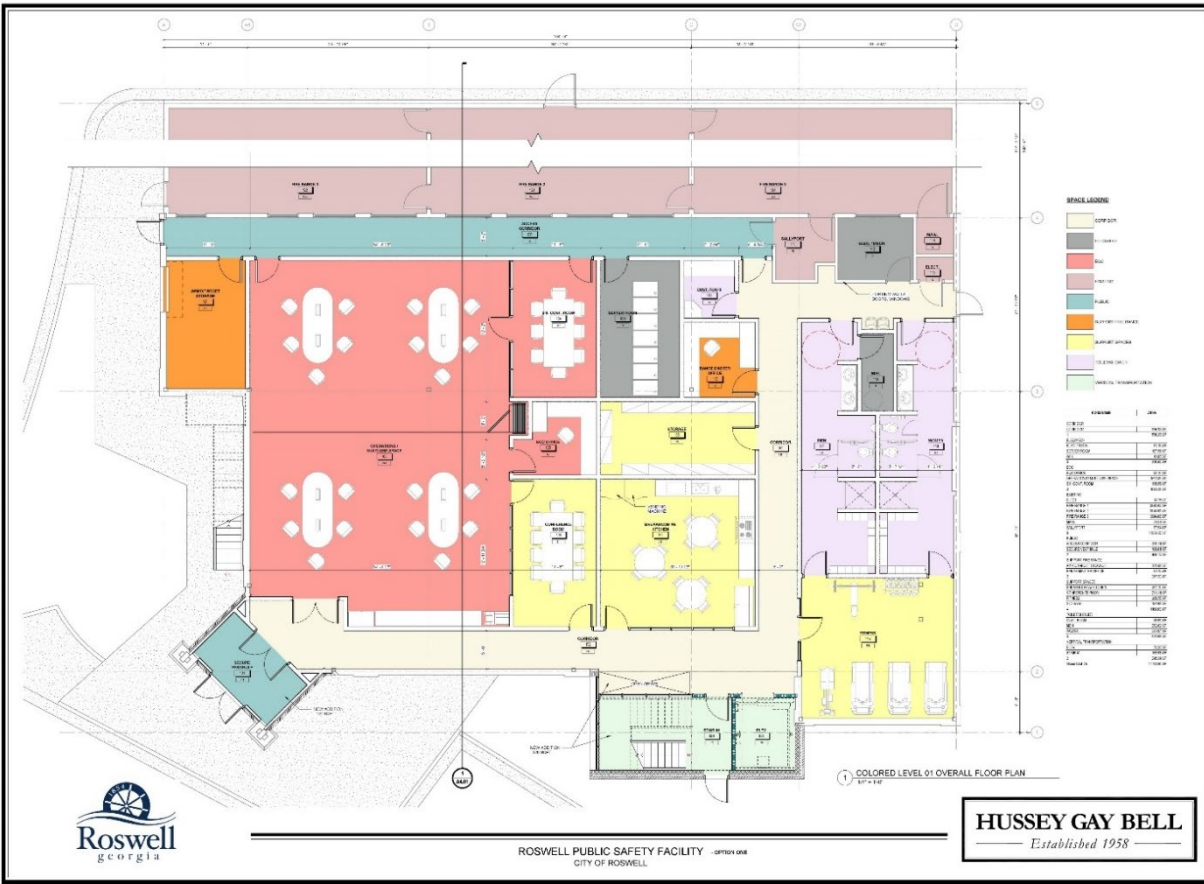




Hall County Sheriff/FBI Joint Training Facility
Gainesville, GA
Size: 24,000 SF
Role: Lead architect/engineer



Douglas County Fire Station No. 9
Douglasville, GA
Size: 17,079 SF
Role: Lead architect/engineer



Joint Use Public Safety Facility
Roswell, GA
Size: 13,200 SF
Role: Lead architect/engineer

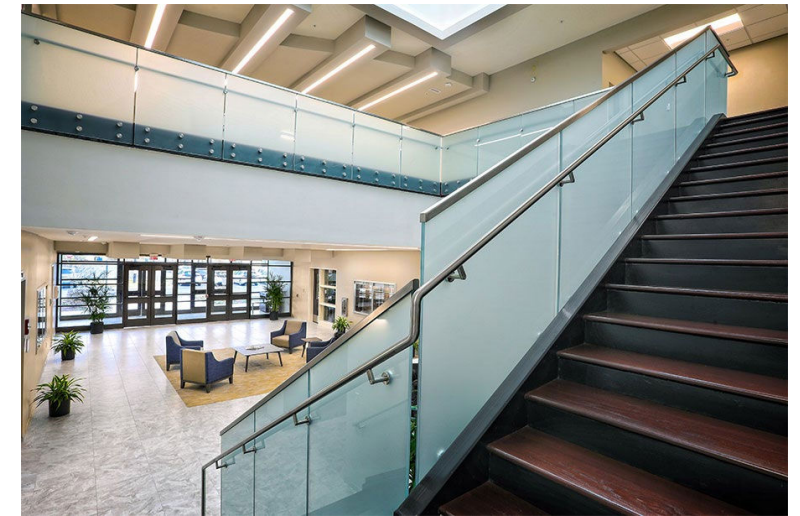




ADMINISTRATIVE & SUPPORT FACILITIES



Floyd Adams Jr. City Services Complex
Savannah, GA
Size: 124,000 SF
Role: Lead architect/engineer





Bryan County Administrative Complex
Bryan County, GA
Size: 30,000 SF
Role: Lead architect/engineer





ARTS & ENTERTAINMENT



Image: Courtesy of prime designer, TVS

Savannah Convention Center Expansion
Savannah, GA
Size: 200,000 SF
Role: Civil engineering



Enmarket Arena
Savannah, GA
Size: 215,000 SF
Role: Civil engineering

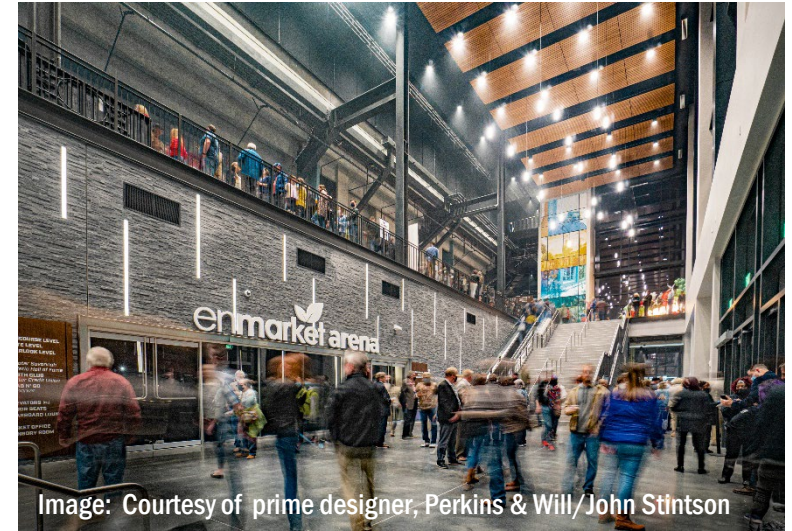


Image: Courtesy of prime designer, Perkins & Will/John Stintson

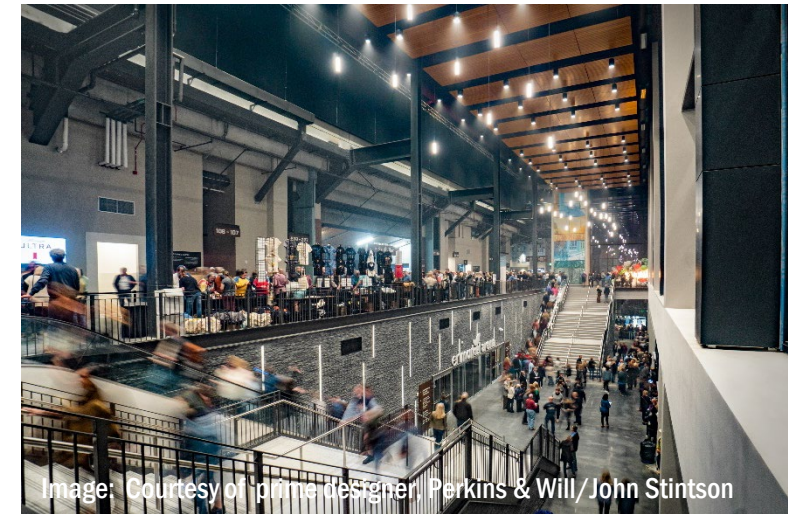


Image: Courtesy of prime designer, Perkins & Will/John Stintson



**COMMUNITY CENTERS &
GATHERING SPACES**



Penn Avenue Resource Center
Savannah, GA
Size: 22,000 SF
Role: Lead architect/engineer



PARKS & REC



**Clarence E. Morgan Central Recreation Complex
& Gym**
Springfield, Effingham County, GA
Size: 27,800 SF
Role: Lead architect/engineer (gym) &
architecture support (complex)





Memorial Stadium
Chatham County, GA
Role: Civil engineering

CONCEPTUAL MASTER PLAN
CHEROKEE BLUFFS
 HALL COUNTY, GEORGIA



GRAPHIC SCALE
 1" = 100'

Hayes James
 ENGINEERS, PLANNERS & SURVEYORS
 NORCROSS, GEORGIA
 (770) 923-1600

BOUNDARY AND TOPOGRAPHIC INFORMATION SHOWN FOR CONCEPTUAL PURPOSES ONLY.



Cherokee Bluffs Park
 Hall County, GA
 Role: Civil engineering



Cherokee Bluffs Park Amphitheatre
Hall County, GA
Role: Civil engineering



Lawrenceville Lawn
Hall County, GA
Role: Civil engineering

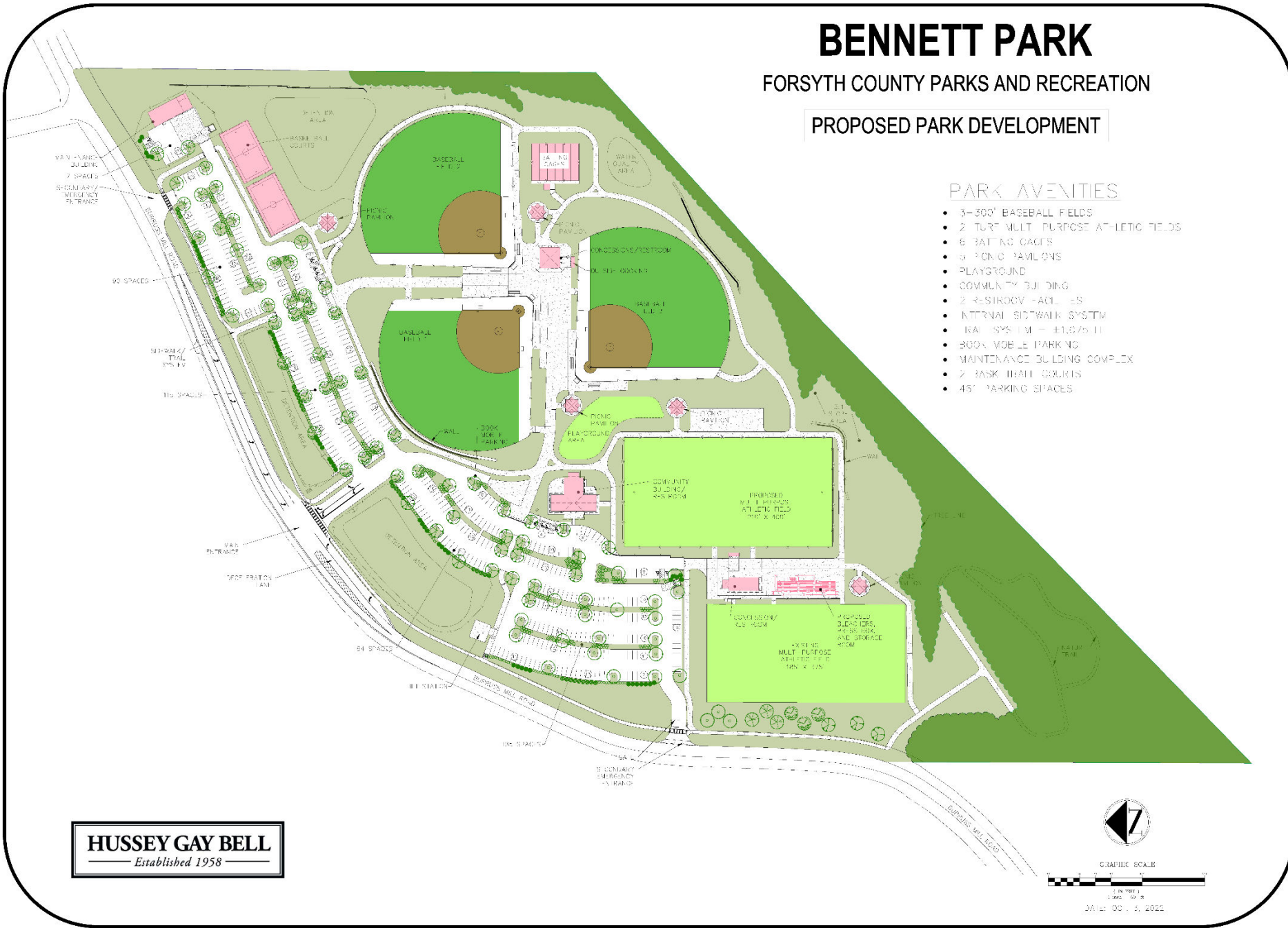
BENNETT PARK

FORSYTH COUNTY PARKS AND RECREATION

PROPOSED PARK DEVELOPMENT

PARK AVENUES

- 3-300' BASEBALL FIELDS
- 2 TURT MULT-PURPOSE ATHLETIC FIELDS
- 6 BATTING CAGES
- 6 PICNIC PAVILIONS
- PLAYGROUND
- COMMUNITY BUILDING
- 2 RESTROOM FACILITIES
- INTERNAL SIDEWALK SYSTEM
- IRRIGATION SYSTEM - 11.0/75.11
- BOOK MOBILE PARKING
- MAINTENANCE BUILDING COMPLEX
- 2 BASKETBALL COURTS
- 451 PARKING SPACES





Patriots Park
Columbia County, GA
Role: Civil engineering



Gateway Park
Columbia County, GA
Role: Civil engineering



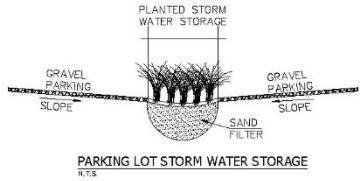
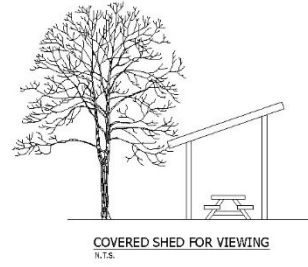
Lakeside Park
Columbia County, GA
Role: Civil engineering



South Gwinnett Park
Gwinnett County, GA
Role: Civil engineering

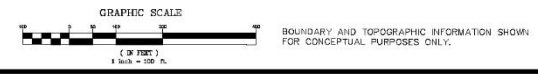


Central Park Playground
Forsyth County, GA
Role: Civil engineering



Eagle's Beak Park
 Conceptual Master Plan
 Forsyth County, GA
 Role: Civil engineering

CONCEPTUAL MASTER PLAN
EAGLES BEAK PARK
 FORSYTH COUNTY, GEORGIA





Midway Park Football Field Expansion
Forsyth County, GA



Hayes James

ENGINEERS, PLANNERS & SURVEYORS

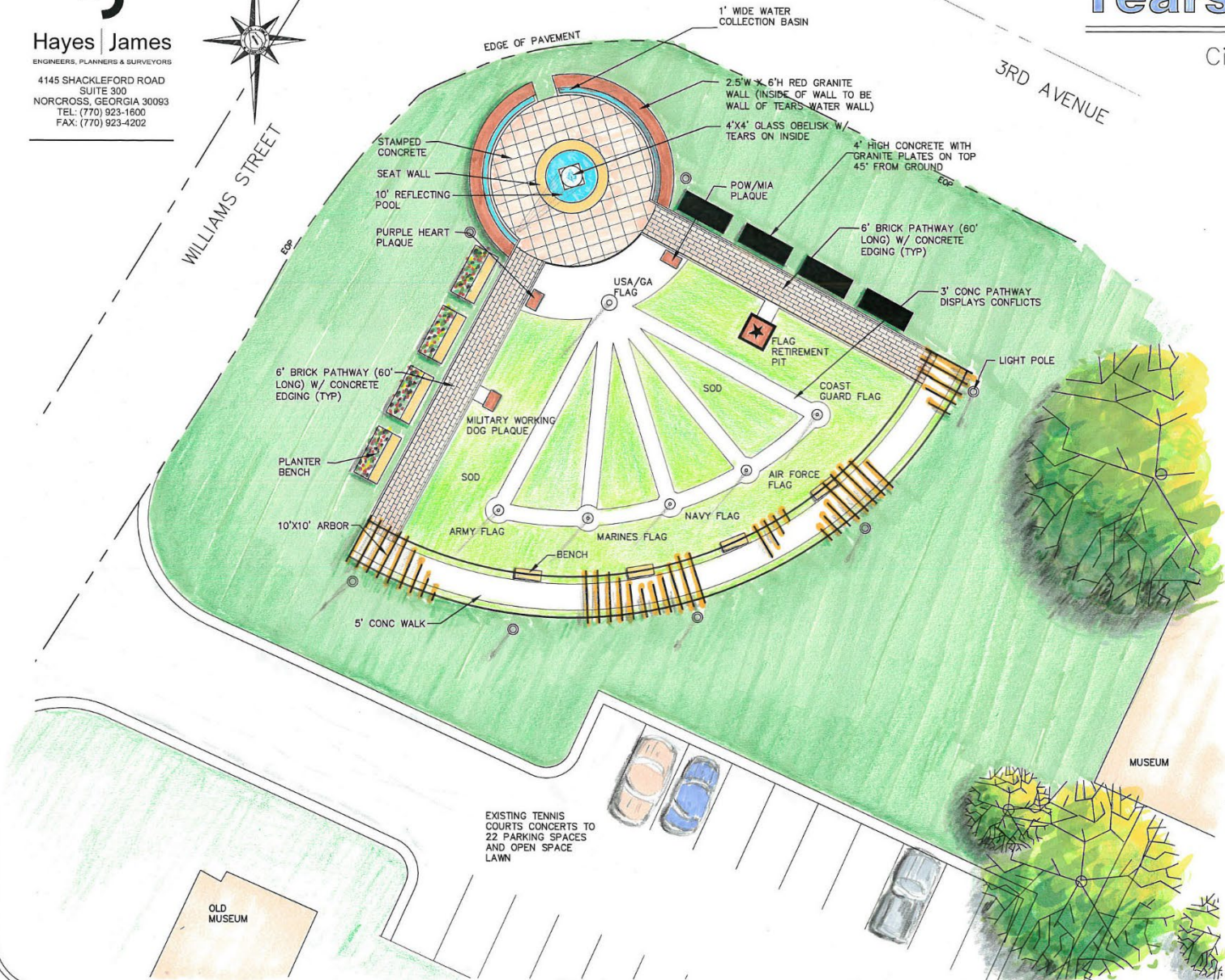
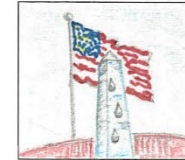
4145 SHACKLEFORD ROAD
SUITE 300
NORCROSS, GEORGIA 30093
TEL: (770) 923-1800
FAX: (770) 923-4202



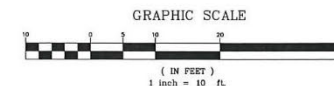
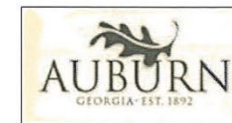
WILLIAMS STREET

Tears of the Fallen

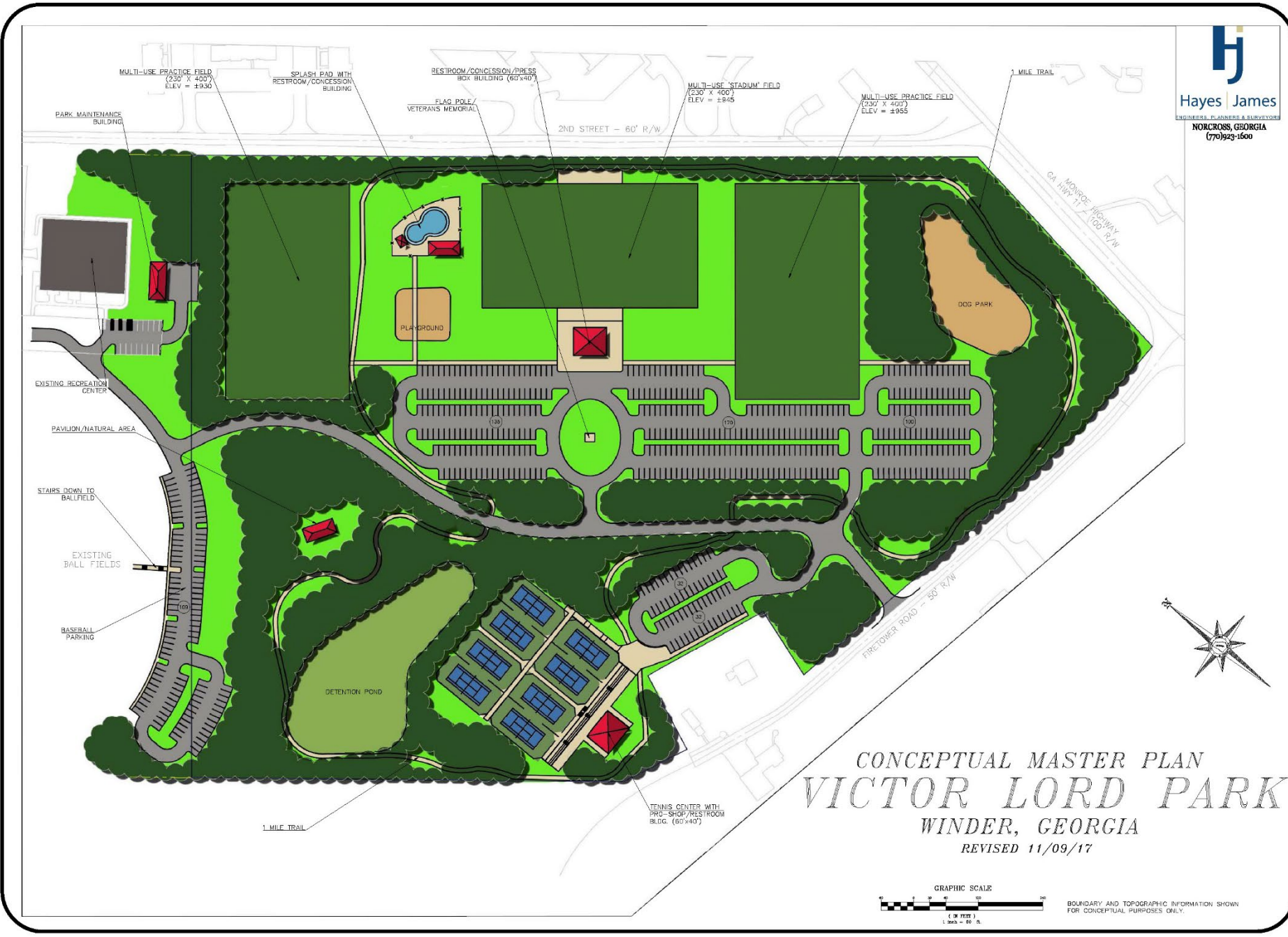
City of Auburn, Georgia




- NOTES:
1. BENCHES UNDER ARBOR ARE TO BE MADE OF TREX (SYNTHETIC WOOD)
 2. BENCHES, TRASH RECEPTACLES AND OTHER SITE FURNISHINGS TO BE DETAILED AT DESIGN DEVELOPMENT PHASE
 3. ARBOR TO BE 10' HIGH CLEAR
 4. 12' HIGH PEDESTRIAN LIGHTPOSTS TO MATCH EXISTING LIGHTS THROUGHOUT CITY
 5. SIGNS WILL BE PUT UP AT THE ENTRY POINTS
 6. PIPE CONNECTION FOR THE WALL WILL BE HIDDEN UNDER THE STAMPED CONCRETE. THERE WILL ALSO BE AN IMBEDDED PIPE FOR WATER CIRCULATION THROUGHOUT THE WATER WALL.
 7. FLAGPOLES TO BE 20' HIGH



Veteran's Memorial
City of Auburn, GA
Role: Civil engineering




Hayes James
 ENGINEERS, PLANNERS & SURVEYORS
 NORCROSS, GEORGIA
 (770)923-1600

Victor Lord Park
 Conceptual Master Plan
 City of Winder, GA
 Role: Civil engineering

CONCEPTUAL MASTER PLAN
VICTOR LORD PARK
 WINDER, GEORGIA
 REVISED 11/09/17



BOUNDARY AND TOPOGRAPHIC INFORMATION SHOWN FOR CONCEPTUAL PURPOSES ONLY.



Lost Mountain Park
Cobb County, GA
Role: Civil engineering



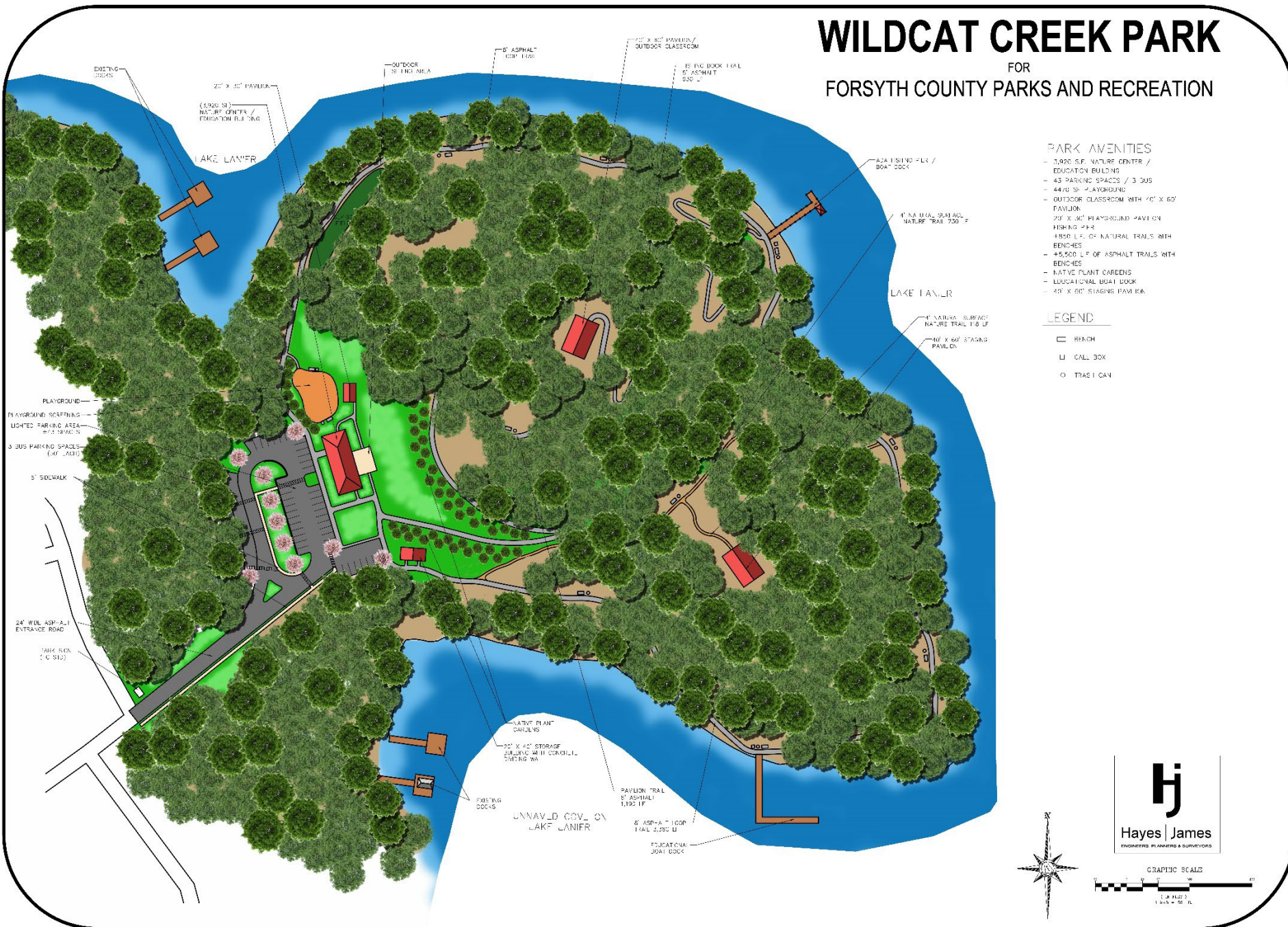
Duncan Park Pool and Spray Pad
Fairburn, GA
Role: Civil engineering



Old Atlanta Park Spray Pad
Forsyth County, GA
Role: Civil engineering

WILDCAT CREEK PARK

FOR
FORSYTH COUNTY PARKS AND RECREATION

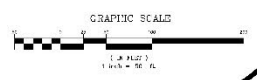


PARK AMENITIES

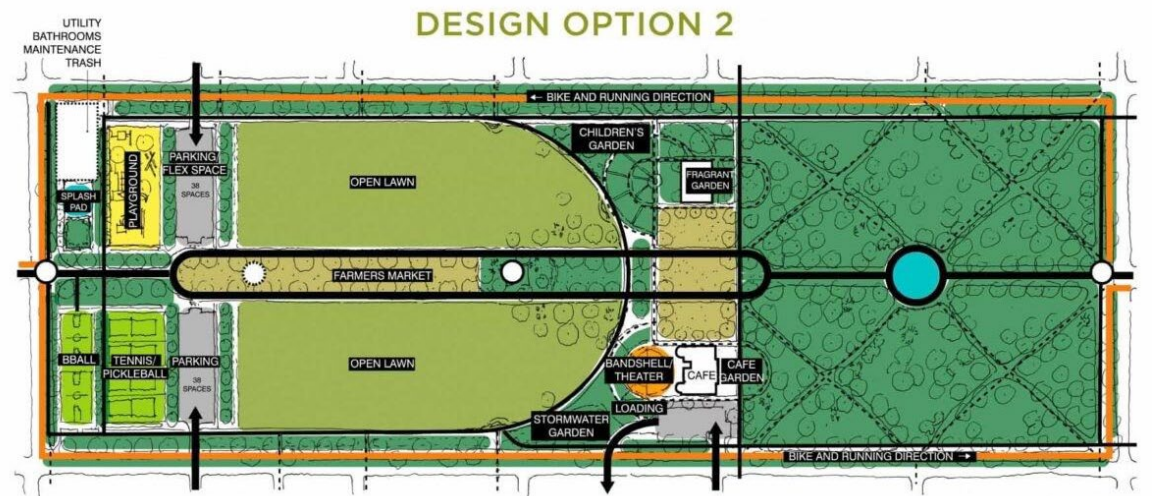
- 3,000 S.F. NATURE CENTER / EDUCATION BUILDING
- 43 PARKING SPACES / 3 BUSES
- 440 S.F. PLAYGROUND
- OUTDOOR CLASSROOM WITH 70' X 60' PAVILION
- 20' X 50' PLAYGROUND PAVILION
- FISHING PIER
- 1,800 L.F. OF NATURAL TRAILS WITH BENCHES
- 45,500 L.F. OF ASPHALT TRAILS WITH BENCHES
- NATIVE PLANT GARDENS
- EDUCATIONAL BOAT DOCK
- 40' X 60' STAGING PAVILION

LEGEND

- ▭ BENCH
- U CALL BOX
- TRASH CAN



Wildcat Creek Park
Forsyth County, GA
Role: Civil engineering



LEGEND

BIKE/JOGGING LANES

PEDESTRIAN PATHS

PARKING

BANDSHELL/THEATER

PLAYGROUND GAME AREA

CRUSHED GRAVEL -- Movable Chairs, Farmers' Market, Etc

SPORTS COURT

OPEN LAWN

TREES/GARDEN -- Gathering, Art, Education, Stormwater, etc

WATER FEATURE

EXISTING STRUCTURE

PROPOSED STRUCTURE

EXISTING MONUMENT

PROPOSED MONUMENT

Forsyth Park Master Plan
Savannah, GA
Role: Local civil sub to Nelson Byrd Wolz

HUSSEY GAY BELL
— Established 1958 —

