





FIRM INTRODUCTION

Our Story



G. Holmes Bell, IV, PE
CEO & Chairman

For more than six decades, we at Hussey Gay Bell have remained steadfast in our commitment to providing an enduring legacy of excellence in design and service in the fields of engineering, architecture and surveying.

Our dedication to the firm's core values of innovation, initiation of ideas and collaboration are exemplified through our intense focus on client relations and production of award-winning work. Yet, the true essence of Hussey Gay Bell's strength lies within the talented group of professionals who work tirelessly on our clients' behalf. We at Hussey Gay Bell understand our duty to perform at the highest levels of standards, both professionally and civically, to enhance the quality of life within all of the communities we serve as evidenced by our established history of involvement with civic and charitable organizations and service leadership on industry and community boards. This commitment to excellence extends to every client and to every community we serve. So, here's to the next 60 years.

Firm History



Our Founders Left to Right:
Mr. DeYoung, Mr. Gay, Mr. Bell, Mr. Hussey

1958

Founded & Incorporated
Civil Engineering Firm
In Savannah, GA

1966

Gus H. Bell, III, PE
Joins Firm

1979

Firm Expands with
Architecture Studio

1986

Gus H. Bell, III, PE
Becomes Chairman & CEO

1987

Firm Expands to
Columbia, SC

1989

Firm Expands to
Charleston, SC

1994

G. Holmes Bell, IV, PE
Joins Firm

2012

G. Holmes Bell, IV, PE
Becomes 3rd
Chairman & CEO

2014

Firm Expands to
Atlanta, GA

2017

Firm Expands to
Statesboro, GA
& Nashville, TN

2018

Firm Celebrates
60 Years

2022

Firm Acquires Hayes James,
Opens Greenville, SC,
Grows The Family



Key Stats

1958

Year Founded

HQ

Savannah

66

Number of Years
in Business

8

Regional Offices In
Southeast

7

Core Markets

175+

Total Employees

36%

Women/Minority
Employees

12

In-House Disciplines

2024

ENR Top 500 Design Firm
ENR Top Southeast Design
Firm

Capabilities

SERVICES

Architecture

Interior Design

Civil Engineering

Transportation Systems Engineering

Water & Wastewater Engineering

Natural Gas Systems Engineering

Environmental Engineering

Structural Engineering

Landscape Architecture

Surveying

Permitting

Construction Management Services

MARKETS

Commercial & Residential

Education

Government

Healthcare

Industrial

Transportation

Water

EXPERIENCE



Automotive

Electric Vehicle Manufacturing

Manufacturing

Hyundai Motor Group Metaplant America (HMGMA)
Bryan County, GA
Size: 3,000+ Acres
Role: A-E design services for multiple Tier 1 supplier projects

HUSSEY GAY BELL
Established 1958



Automotive

Electric Vehicle Manufacturing

Manufacturing

Hyundai Mobis BSA 2 and Module Shop @ HMGMA

Bryan County, GA

Size: 150 Acres

Role: A-E design services & survey

HUSSEY GAY BELL
Established 1958

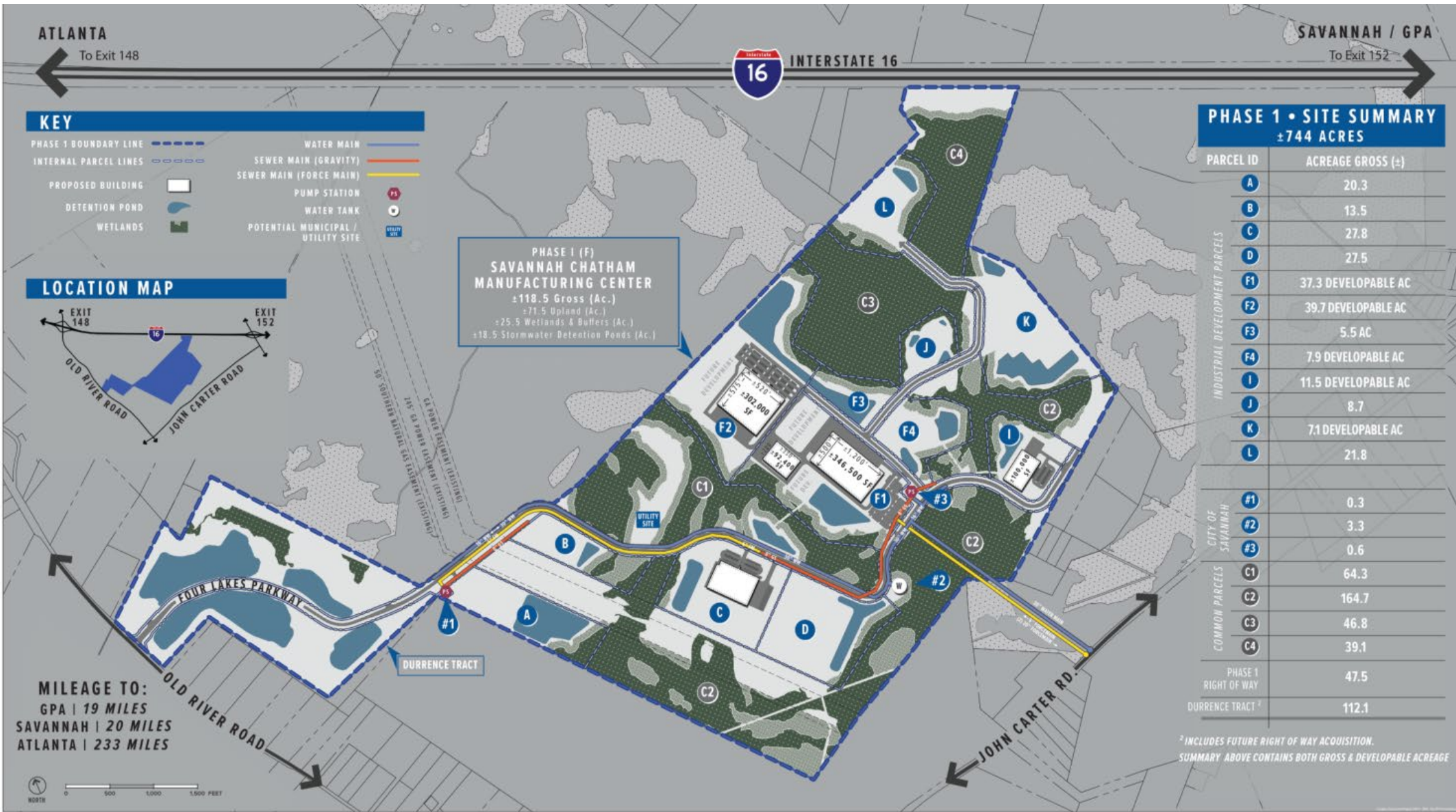
Hyundai Motor Group Metaplant America, Bryan County, GA

Hussey Gay Bell On-Site Tier 1 Supplier Projects Exhibit



HUSSEY GAY BELL
Established 1958

HUSSEY GAY BELL
Established 1958



Savannah Chatham
Manufacturing Center
Chatham County, GA
Size: 744 Acres
Role: Due-Diligence, Lead
Utilities Engineer, Multiple
Tier 1 Supplier Projects

CONCEPTUAL MASTER PLAN | PHASE 1
SAVANNAH CHATHAM MANUFACTURING CENTER

CHATHAM COUNTY, GEORGIA
JULY 2023

50 PARK OF COMMERCE WAY
SAVANNAH, GA 31405 • 912.234.5300
WWW.THOMASANDHUTTON.COM

THOMAS AND HUTTON

HUSSEY GAY BELL
Established 1958



Automotive

Manufacturing

Seoyon E-Hwa Manufacturing Facility
Savannah Chatham Manufacturing Center
Chatham County, GA
Role: Lead Architect/Engineer

HUSSEY GAY BELL
Established 1958



Headquarters

Manufacturing

J. C. Bamford North America Headquarters
Tract, Pooler, GA
Size: 1,100 Acres, 500,000+ SF
Role: Due-Diligence, Lead Architect/Engineer

HUSSEY GAY BELL
Established 1958



Aerospace

Manufacturing

Boeing 787 Manufacturing Facility Master
Planning & Design, Charleston, SC
Size: 240 Acres
Role: Due-Diligence, Civil Engineering

HUSSEY GAY BELL
Established 1958



Logistics & Supply Chain

NFI Industries Transload & Cross-Dock Facility at
Georgia Ports, Port Wentworth, GA
Size: 300,000 SF
Role: Lead Architect/Engineer



331 Acres



Automotive

Manufacturing

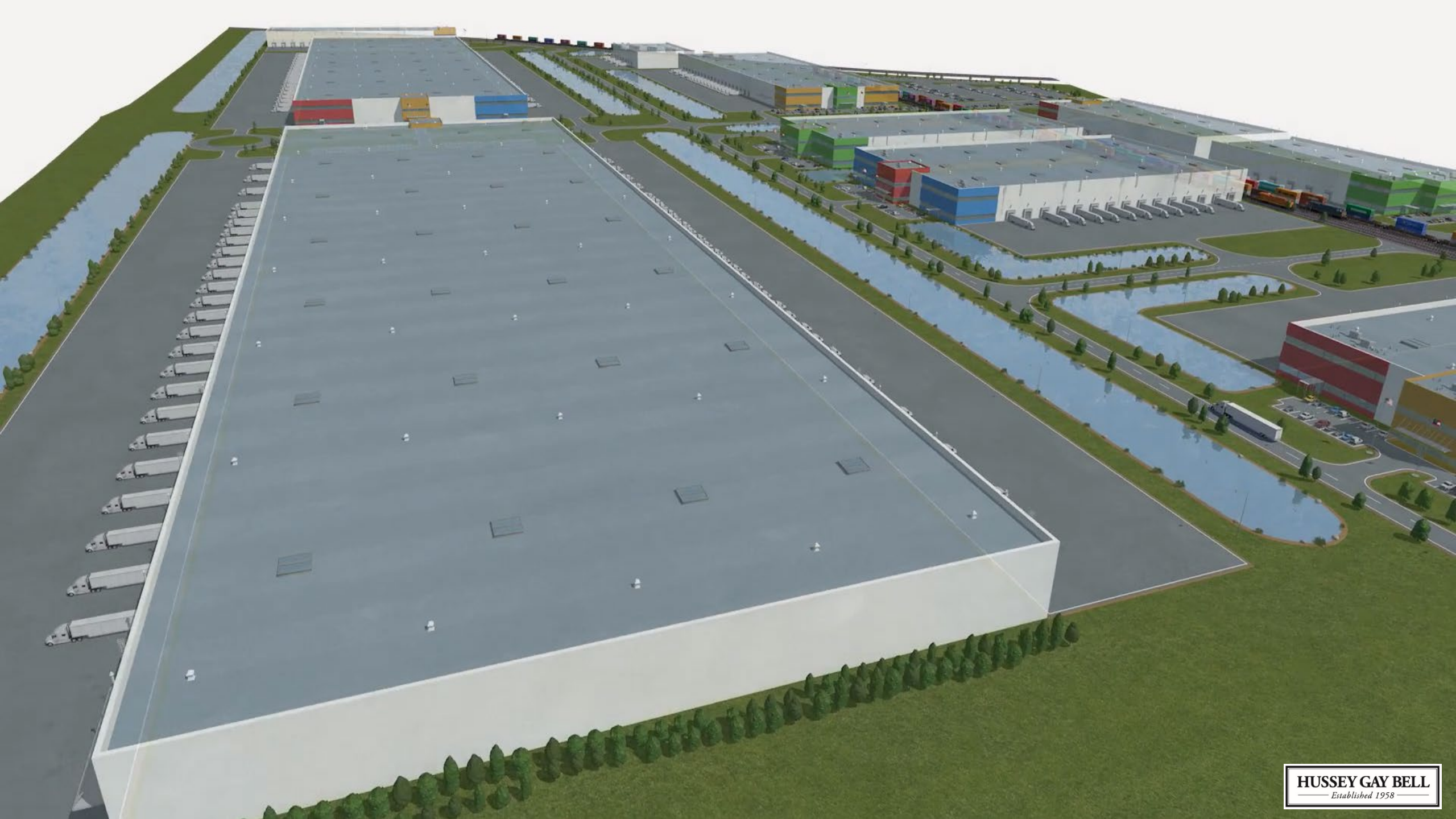
GA Highway 257 Rail-Served Site

Dublin-Laurens County, GA

Size: 331 Acres

Role: Due-Diligence, Lead Civil Engineer & Surveyor

HUSSEY GAY BELL
Established 1958





Automotive

Manufacturing

Seohan Auto Georgia Manufacturing Facility
Tradeport East Business Center, Midway, GA

Size: 298,000 SF

Role: Lead Architect

HUSSEY GAY BELL
Established 1958



Automotive

Manufacturing

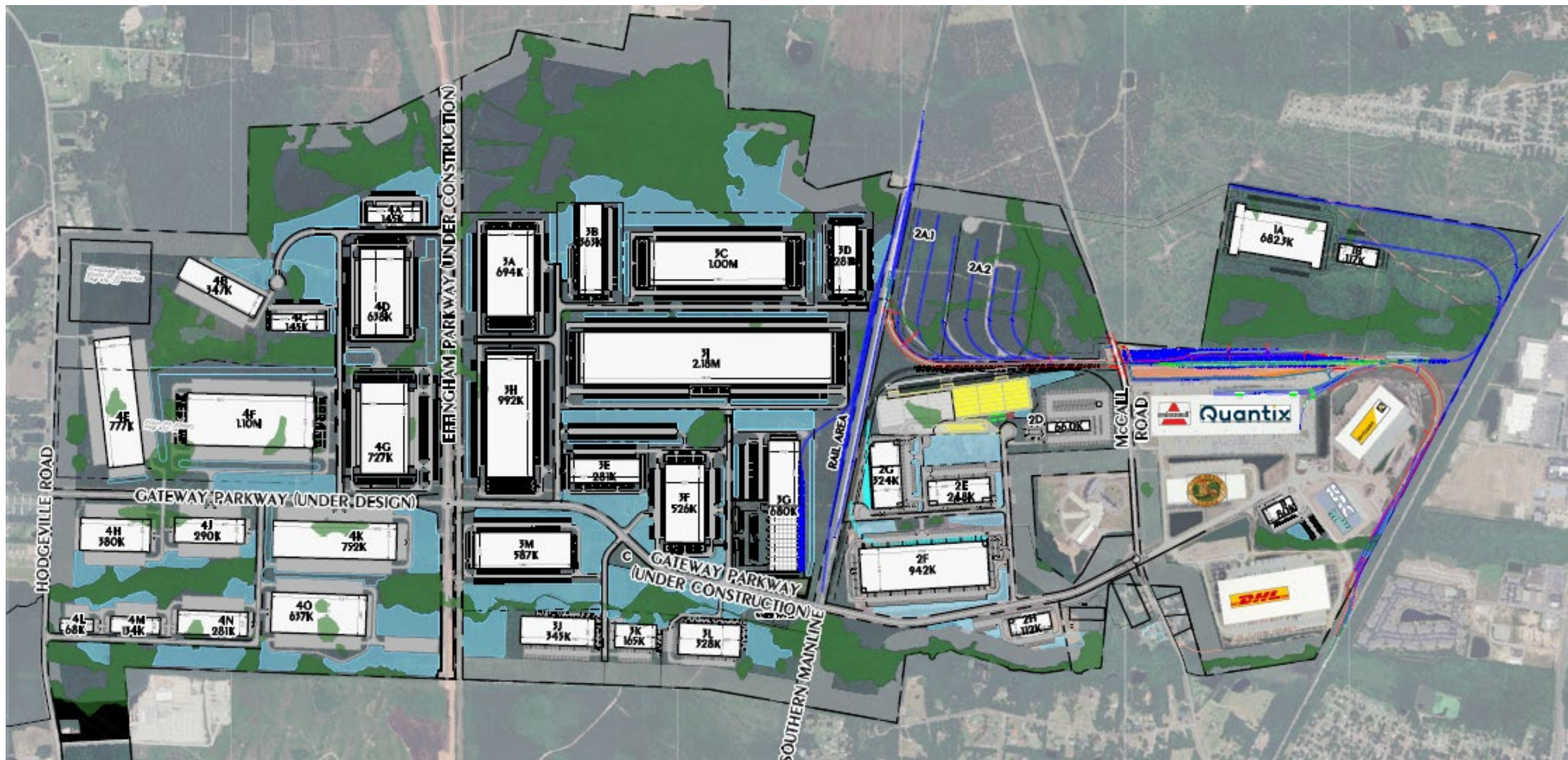
Grande View Tract, Effingham County, GA
Size: 448 Acres
Role: Role: Due-Diligence, Lead Civil Engineer & Surveyor



Automotive

Manufacturing

Sewon America
Grande View Tract, Effingham County, GA
Role: Lead Civil Engineer



Logistics & Supply Chain

Savannah Gateway Industrial Hub, Effingham County, GA

Size: 2,600 Acres

Role: Due-Diligence & full A-E designs for multiple end users



Logistics & Supply Chain

A&R Logistics (Quantix) at Savannah Gateway Industrial Hub
Rincon, GA
Size: 1,400,000 SF
Role: Lead Architect/Engineer

HUSSEY GAY BELL
Established 1958



Logistics & Supply Chain

Manufacturing

Belfast Commerce Park at Heartwood, Bryan County, GA
Size: 1,040 Acres
Role: Due-Diligence & full A-E designs for multiple end users



Logistics & Supply Chain

Brown Thrasher Logistics Center Warehouse at Belfast Commerce Park at Heartwood, Bryan County, GA

Size: 281,067 SF

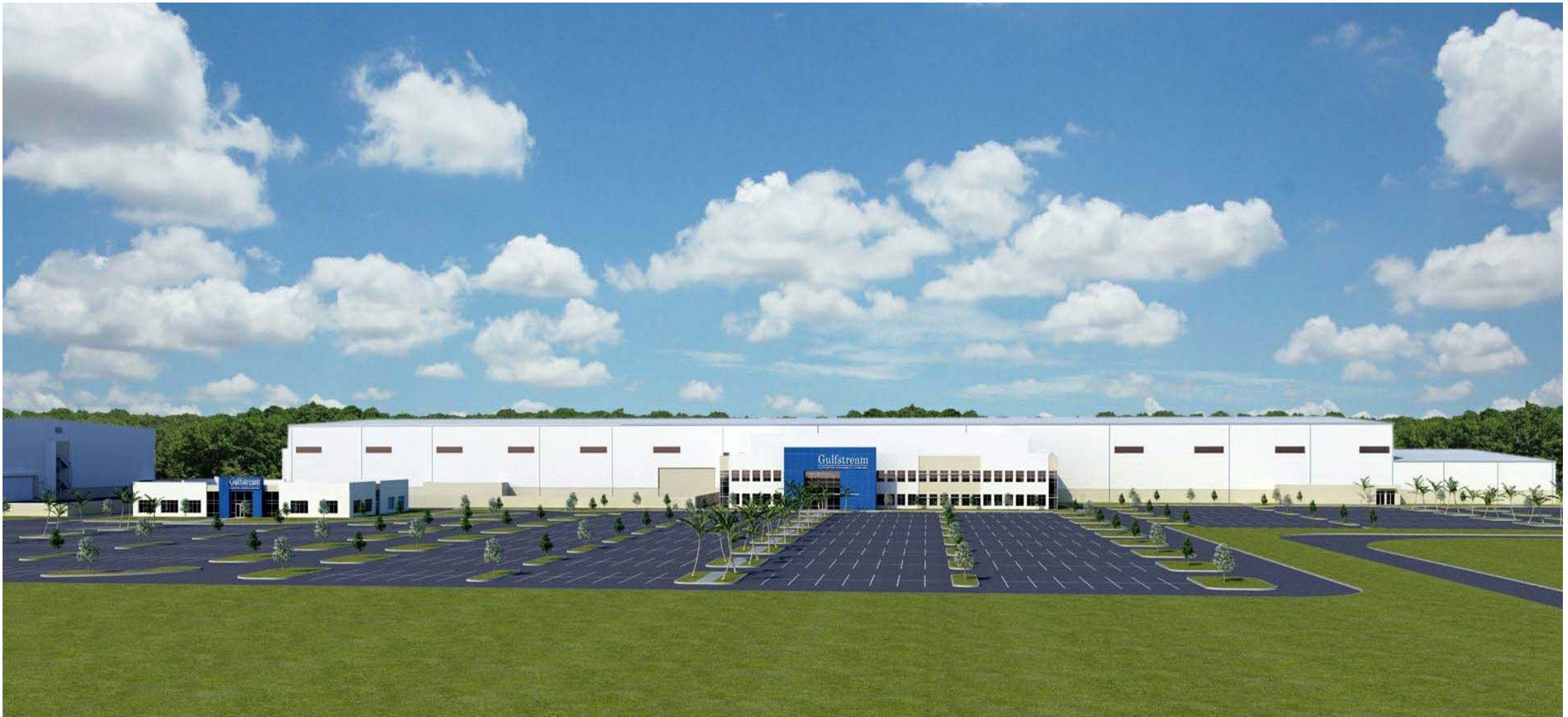
Role: Lead Civil Engineer

HUSSEY GAY BELL
Established 1958



Logistics & Supply Chain

Hooker Furnishings at Tradeport East Business Center, Midway, GA
Size: 1,000,000 SF
Role: Lead Architect/Engineer



Aerospace

Headquarters

Gulfstream Building Z
Savannah, GA
Size: 440,000 SF
Role: Lead Civil Engineer

HUSSEY GAY BELL
Established 1958



Gulfstream Wing Assembly Bldg
Savannah, GA
Size: 223,615 SF
Role: Lead Architect/Engineer



Aerospace

Headquarters



