

HUSSEY GAY BELL

Established 1958

K-12 EXPERIENCE

ATHLETIC FACILITIES

CAREER ACADEMIES

ELEMENTARY SCHOOLS

MIDDLE SCHOOLS

HIGH SCHOOLS

STEM FACILITIES, LABS

PERFORMING ARTS

SUPPORTING FACILITIES

2023





At A Glance

1958

Year Founded

HQ

Savannah

65

Number of Years
in Business

8

Regional Offices In
Southeast

7

Core Markets

150+

Total Employees

36%

Women/Minority
Employees

12

In-House Disciplines

2023

ENR Top 500 Design Firm
ENR Top Southeast Design
Firm

Services and Core Markets

SERVICES

Architecture
Interior Design
Civil Engineering
Transportation Systems Engineering
Water & Wastewater Engineering
Natural Gas Systems Engineering
Environmental Engineering
Structural Engineering
Landscape Architecture
Surveying
Permitting
Construction Management Services

MARKETS

7 core markets

Commercial & Residential
Education
Government
Healthcare
Industrial
Transportation
Water

Elementary Schools

Otis Brock Elementary School, Savannah-Chatham County Public School System, Savannah, GA

Completion Date: 2016

Size: 94,000 SF

Construction Cost: \$18M

+ Architecture, Interiors, Civil & Structural Engineering



Juliette Low Elementary School, Savannah-Chatham County Public School System, Savannah, GA

Completion Date: 2017

Size: 127,855 SF

Construction Cost: \$24.1M

+ Architecture, Interiors, Civil & Structural Engineering



Meadowcreek Cluster Elementary School, Gwinnett County Public Schools, Norcross, GA

Completion Date: 2018 (design)

Size: 207,616 SF

Construction Cost: \$23M (on hold)

+ Architecture & Interiors



Chesney Elementary School, Gwinnett County Public Schools, Duluth, GA

Completion Date: 2020

Size: 33,500 SF

Construction Cost: \$5.9M

+ Architecture



Middle Schools



Coleman Middle School Renovation, Gwinnett County Public Schools, Duluth, GA

Completion Date: 2016

Size: 123,200 SF

Construction Cost: \$5.6M

+ Architecture & Interiors

Meadow Glen Middle School, Lexington County School District One, Lexington County, SC

Completion Date: 2012

Size: 180,000 SF

Construction Cost: \$30.6M

+ Architecture, Interiors & Civil Engineering





Camp Road Middle School, Charleston County School District, Charleston, SC
Completion Date: 2020
Size: 137,000 SF
Construction Cost: \$52M
+ Civil Engineering

High Schools

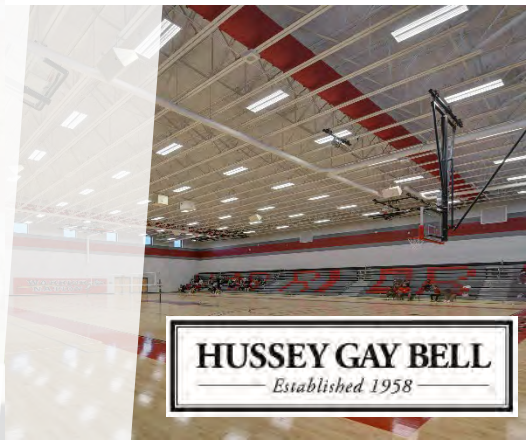
Herschel V. Jenkins High School, Savannah-Chatham County Public School System, Savannah, GA

Completion Date: 2022

Size: 241,651 SF

Construction Cost: \$58M

+ Architecture, Interiors, Civil & Structural Engineering



HUSSEY GAY BELL
Established 1958



Mingledorff Hall Upper School STEM Center, Savannah Country Day School, Savannah, GA
Completion Date: 2022
Size: 32,000 SF
Construction Cost: \$12.6M
+ Architecture, Civil & Structural Engineering

Windsor Forest High School, Savannah-Chatham County Public School System, Savannah, GA

Completion Date: 2025 est.

Size: 900 FTE

Construction Cost: \$71M est.

+ Architecture, Interiors, Civil & Structural Engineering



Gwinnett School of Math, Science & Technology, Gwinnett County Public Schools

Lawrenceville, GA

Completion Date: 2010

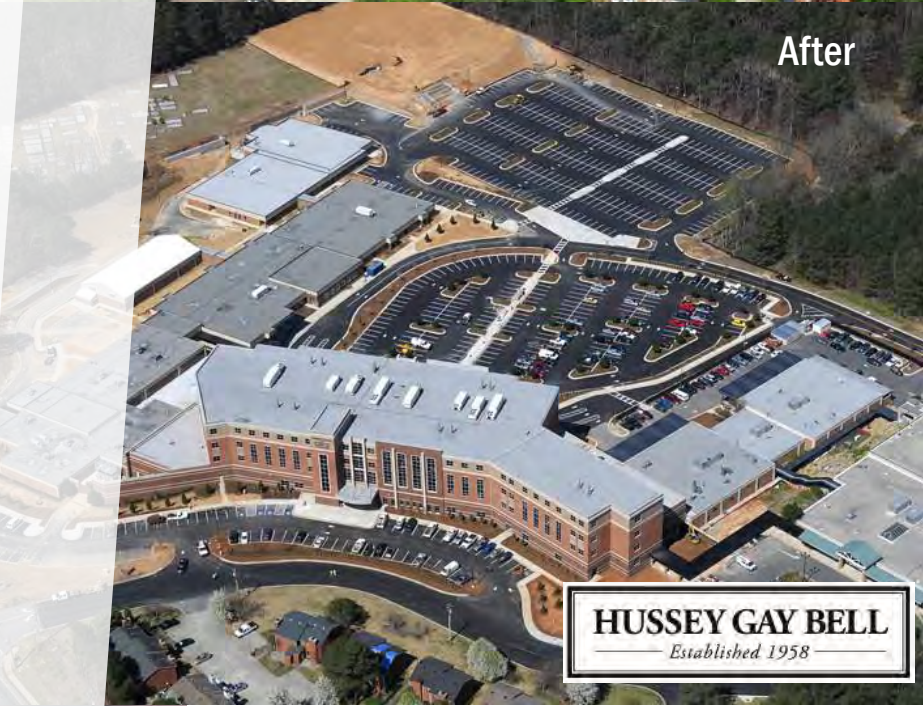
Size: 100,000 SF Renovated / 260,000 SF New

Construction Cost: \$35M

+ Architecture & Interiors



Before



After



East Hall High School Expansion & Renovation, Hall County School District, Hall County, GA

Completion Date: 2024 est.

Size: 125,000 SF

Construction Cost: \$32M

+ Architecture, Interiors & Civil Engineering



Cedar Grove High School Auditorium, DeKalb County School District, Ellenwood, GA

Completion Date: 2023

Size: 21,800 SF

Construction Cost: \$9.8M

+ Architecture & Interiors



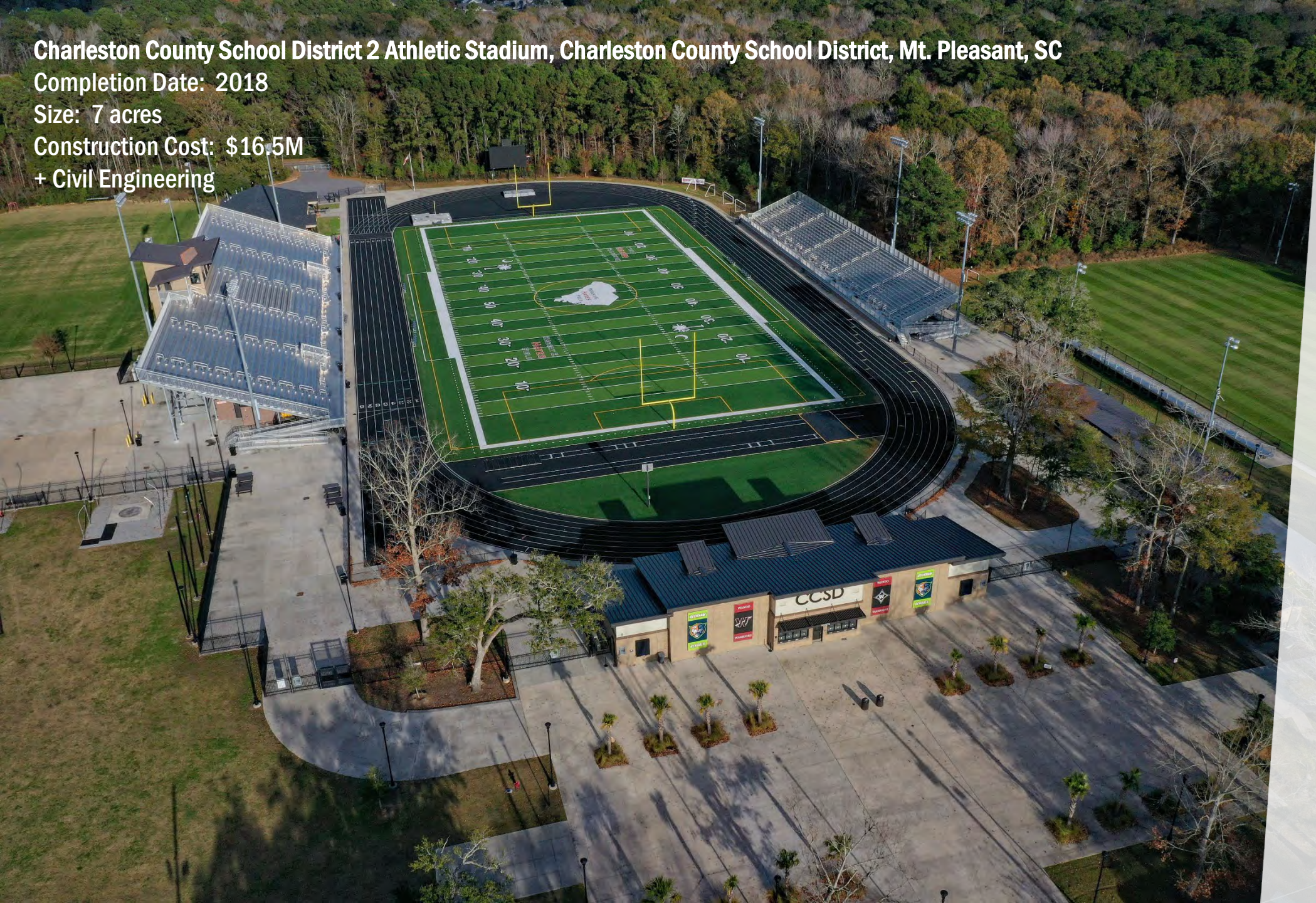
Charleston County School District 2 Athletic Stadium, Charleston County School District, Mt. Pleasant, SC

Completion Date: 2018

Size: 7 acres

Construction Cost: \$16.5M

+ Civil Engineering





Wando High School, Charleston County School District, Mt. Pleasant, SC
Completion Date: 2003
Size: 433,121 SF
Construction Cost: \$60M
+ Civil Engineering

Whale Branch Early College High School, Beaufort County School District, Seabrook, SC

Completion Date: 2010

Size: 180,000 SF

Construction Cost: \$28.7M

+ Architecture



**Get In Touch or
Send Us an
Inquiry Regarding
Project
Capabilities:**

<https://husseygaybell.com/contact-us/>

**Follow us
@husseygaybell**



HUSSEY GAY BELL

Established 1958

K-12 EXPERIENCE

ATHLETIC FACILITIES

CAREER ACADEMIES

ELEMENTARY SCHOOLS

MIDDLE SCHOOLS

HIGH SCHOOLS

STEM FACILITIES, LABS

PERFORMING ARTS

SUPPORTING FACILITIES

2023

